

Datasheet for ABIN2665357
anti-Sema4a antibody

3 Images



[Go to Product page](#)

Overview

Quantity:	100 µg
Target:	Sema4a
Reactivity:	Human, Mouse
Host:	Mouse
Clonality:	Monoclonal
Application:	Western Blotting (WB), Immunohistochemistry (IHC), Immunoprecipitation (IP), ELISA (Capture), ELISpot (Detection) (ELISPOT (Detection)), Intracellular Flow Cytometry (ICFC), Neutralization (Neut)

Product Details

Clone:	5E3-SEMA4A
Isotype:	IgG1 lambda
Purification:	The antibody was purified by affinity chromatography.

Target Details

Target:	Sema4a
Alternative Name:	SEMA4A (Sema4a Products)
Background:	Semaphorin 4A (SEMA4A) is a class IV semaphorin of soluble and transmembrane proteins originally identified as SemB. It is a single-pass type I membrane protein containing an immunoglobulin-like C2-type domain, a PSI domain, and a Sema domain. SEMA4A is expressed on dendritic cells, activated B cells, and T cells. It is also found on different tissues, such as

Target Details

those in brain, lung, kidney, spleen, and testis. In the immune system, SEMA4A functions as an activator in the T-cell-mediated immune response and suppresses vascular endothelial growth factor (VEGF)-mediated endothelial cell migration and proliferation in vitro and angiogenesis in vivo. Like other semaphorin family members it is also involved in guidance of axonal migration during neuronal development and in immune responses.

Application Details

Application Notes: Optimal working dilution should be determined by the investigator.

Restrictions: For Research Use only

Handling

Concentration: 0.5 mg/mL

Buffer: Phosphate-buffered solution, pH 7.2, containing 0.09 % sodium azide.

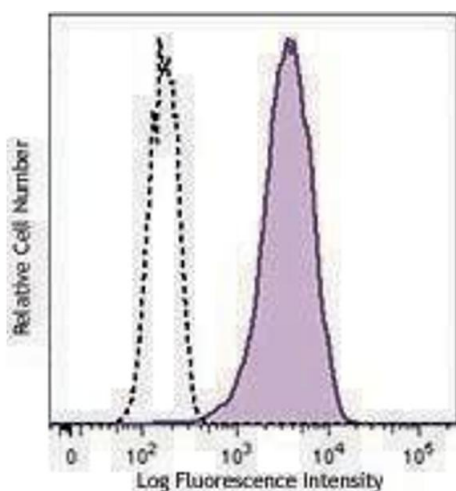
Preservative: Sodium azide

Precaution of Use: This product contains Sodium azide: a POISONOUS AND HAZARDOUS SUBSTANCE which should be handled by trained staff only.

Storage: 4 °C

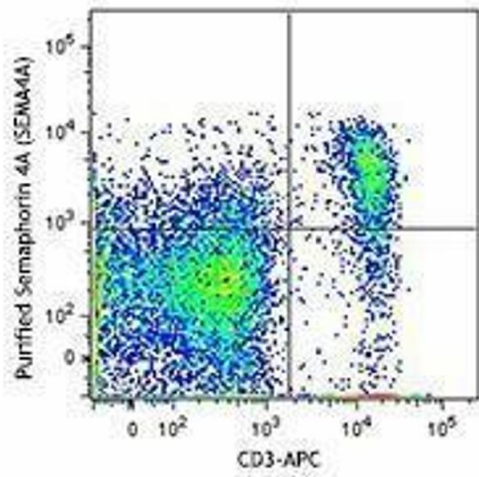
Storage Comment: The antibody solution should be stored undiluted between 2°C and 8°C.

Images



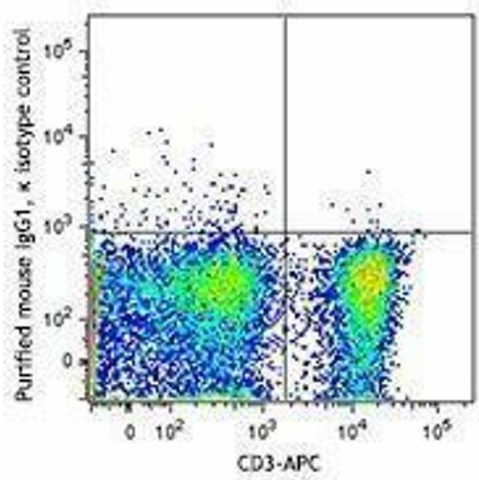
Flow Cytometry

Image 1.



Flow Cytometry

Image 2.



Flow Cytometry

Image 3.