

Datasheet for ABIN2665358

anti-INPP5D antibody[Go to Product page](#)**1** Image

Overview

Quantity:	100 µg
Target:	INPP5D
Reactivity:	Human, Mouse
Host:	Mouse
Clonality:	Monoclonal
Application:	ELISA

Product Details

Clone:	P1C1-A5
Isotype:	IgG1 kappa
Purification:	The antibody was purified by affinity chromatography.

Target Details

Target:	INPP5D
Alternative Name:	SHIP-1 (INPP5D Products)
Background:	<p>SH2-containing inositol phosphatase 1 (SHIP1) is a hematopoietic phosphatase that hydrolyzes key signaling lipid PI(3,4,5)P(3) to PI(3,4)P(2). SHIP-1 is located in the cytoplasm and is recruited to the cell surface upon receptor ligation. It plays critical roles in hematopoietic cell proliferation, activation, differentiation, and survival by regulating PI3K and Akt pathways. Aberrant regulation of PI3K signaling can induce autoimmune diseases and cancer formation.</p>
Pathways:	TCR Signaling , BCR Signaling , Warburg Effect

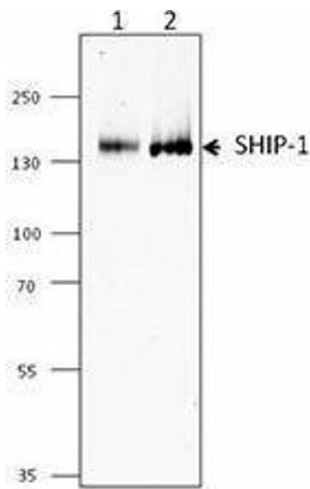
Application Details

Application Notes:	Optimal working dilution should be determined by the investigator.
Restrictions:	For Research Use only

Handling

Concentration:	0.5 mg/mL
Buffer:	Phosphate-buffered solution, pH 7.2, containing 0.09 % sodium azide.
Preservative:	Sodium azide
Precaution of Use:	This product contains Sodium azide: a POISONOUS AND HAZARDOUS SUBSTANCE which should be handled by trained staff only.
Storage:	4 °C
Storage Comment:	The antibody solution should be stored undiluted between 2°C and 8°C.

Images



Western Blotting

Image 1.