

Datasheet for ABIN2666085

**anti-SUPT16H antibody****2** Images[Go to Product page](#)

## Overview

Quantity:	100 µg
Target:	SUPT16H
Reactivity:	Human
Host:	Mouse
Clonality:	Monoclonal
Conjugate:	This SUPT16H antibody is un-conjugated
Application:	Biochemical Assay (BCA)

## Product Details

Clone:	8D2
Isotype:	IgG2a kappa
Cross-Reactivity (Details):	weakly reacts with mouse Spt16
Purification:	The antibody was purified by affinity chromatography.

## Target Details

Target:	SUPT16H
Alternative Name:	Spt16 ( <a href="#">SUPT16H Products</a> )
Background:	Spt16 is a 120-140 kD nuclear protein and a component of the FACT complex (facilitates chromatin transcription). The FACT140 complex is composed of the Spt16 and the SSRP1 proteins. This complex interacts with nucleosomes and histone H2A/H2B dimers to promote nucleosome disassembly and allow transcription elongation. The 8D2 monoclonal antibody

## Target Details

recognizes human Spt16 and has been shown to be useful for Western blotting.

Pathways: [Chromatin Binding](#)

## Application Details

Application Notes: Optimal working dilution should be determined by the investigator.

Restrictions: For Research Use only

## Handling

Concentration: 0.5 mg/mL

Buffer: phosphate-buffered solution, pH 7.2, containing 0.09 % sodium azide. The antibody is provided at 0.5 mg/mL.

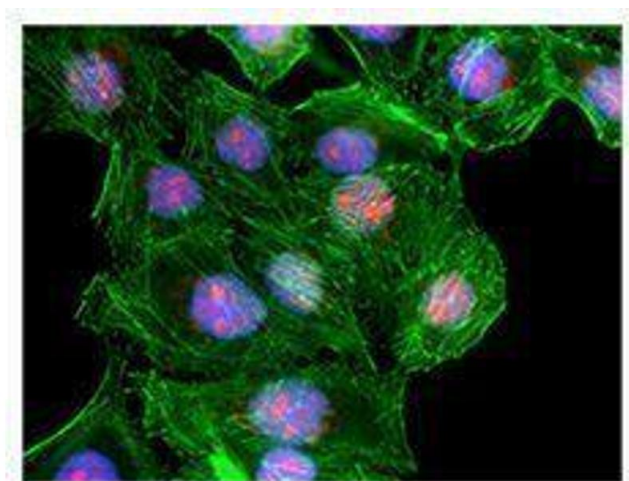
Preservative: Sodium azide

Precaution of Use: This product contains Sodium azide: a POISONOUS AND HAZARDOUS SUBSTANCE which should be handled by trained staff only.

Storage: 4 °C

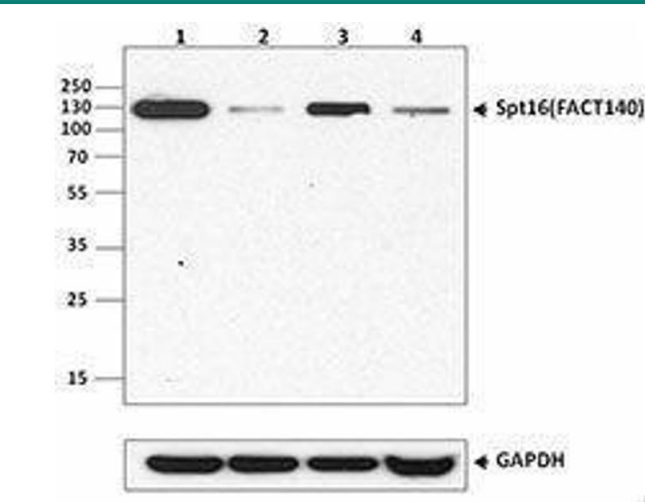
Storage Comment: Upon receipt, store between 2°C and 8°C.

## Images



### Immunofluorescence

Image 1.



Western Blotting

Image 2.