



[Go to Product page](#)

Datasheet for ABIN2666216
anti-gamma Tubulin antibody

2 Images

Overview

Quantity:	200 µL
Target:	gamma Tubulin (TUBG)
Reactivity:	Mouse, Human
Host:	Rabbit
Clonality:	Polyclonal
Conjugate:	This gamma Tubulin antibody is un-conjugated
Application:	Biochemical Assay (BCA)

Product Details

Clone:	Poly6209
Isotype:	IgG
Purification:	The antibody was purified by antigen-affinity chromatography.

Target Details

Target:	gamma Tubulin (TUBG)
Alternative Name:	Tubulin-gamma (TUBG Products)
Background:	<p>γ-tubulin is a 51 kD member of the tubulin superfamily and is conserved between yeast and mammals. This cytoskeletal protein is highly expressed in centrosomes and is thought to be involved in cytoskeletal organization and mitosis. γ-tubulin is expressed at highest levels during prophase to metaphase and can be modified by phosphorylation. This protein has been shown to interact with α-tubulin, paxillin, and RAC GTPase activated protein 1. The Poly6209 antibody</p>

Target Details

has been shown to be useful for Western blotting of human and mouse γ -tubulin.

Application Details

Application Notes: Optimal working dilution should be determined by the investigator.

Restrictions: For Research Use only

Handling

Format: Liquid

Buffer: phosphate-buffered solution, pH 7.2, containing 0.09 % sodium azide and 50 % glycerol.

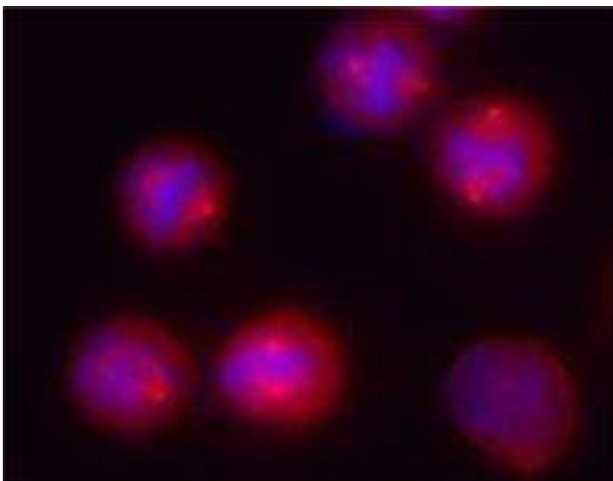
Preservative: Sodium azide

Precaution of Use: This product contains Sodium azide: a POISONOUS AND HAZARDOUS SUBSTANCE which should be handled by trained staff only.

Storage: -20 °C

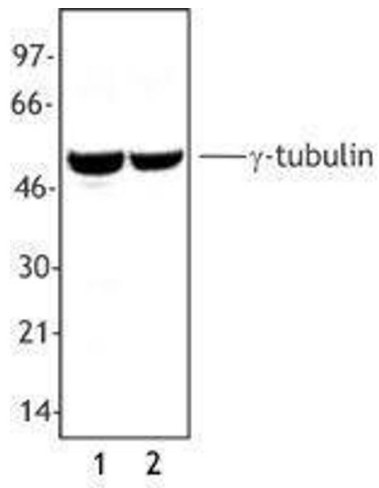
Storage Comment: Upon receipt, store frozen at -20°C.

Images



Immunofluorescence

Image 1.



Western Blotting

Image 2.