

Datasheet for ABIN2666364

**anti-SIK2 antibody**

## 2 Images

[Go to Product page](#)

## Overview

Quantity:	100 µg
Target:	SIK2
Reactivity:	Human
Host:	Mouse
Clonality:	Monoclonal
Application:	Flow Cytometry (FACS)

## Product Details

Clone:	S15G10
Isotype:	IgG1 kappa
Purification:	The antibody was purified by affinity chromatography.

## Target Details

Target:	SIK2
Alternative Name:	SIK2 ( <a href="#">SIK2 Products</a> )
Background:	SIK2 (Salt inducible kinase 2) belongs to the protein kinase superfamily, CAMK Ser/Thr protein kinase family, and AMP-activated protein kinase (AMPK) subfamily, predicted molecular weight 104 kD. SIK2 is found in adipocytes and might be involved in metabolic regulation in adipose tissue. SIK2 phosphorylates ser794 of human insulin receptor substrate-1 (IRS1) in insulin-stimulated adipocytes, playing important roles in modulating the insulin-signaling cascade of adipocytes. Clone S15G10 has been shown to be useful for western blotting,

## Target Details

immunoprecipitation, and immunofluorescence staining of human SIK2 protein.

## Application Details

Application Notes: Optimal working dilution should be determined by the investigator.

Restrictions: For Research Use only

## Handling

Concentration: 0.5 mg/mL

Buffer: phosphate-buffered solution, pH 7.2, containing 0.09 % sodium azide at 0.5 mg/mL.

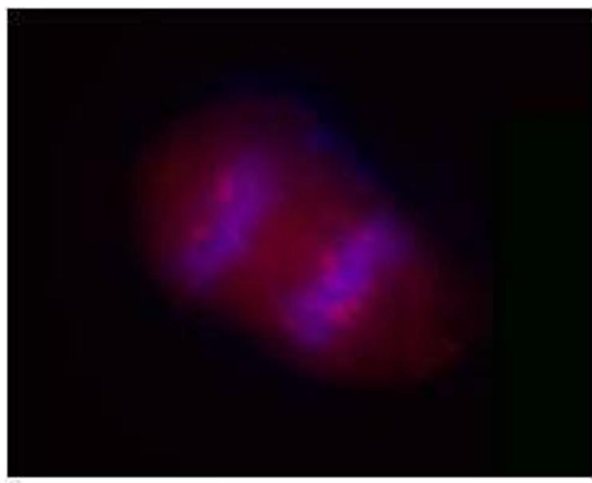
Preservative: Sodium azide

Precaution of Use: This product contains Sodium azide: a POISONOUS AND HAZARDOUS SUBSTANCE which should be handled by trained staff only.

Storage: 4 °C

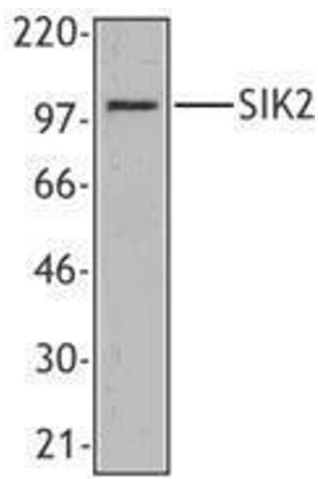
Storage Comment: Upon receipt, store undiluted between 2°C and 8°C.

## Images



### Immunofluorescence

Image 1.



Western Blotting

Image 2.