

Datasheet for ABIN2666367

anti-SSRP1 antibody

2 Images

[Go to Product page](#)

Overview

Quantity:	100 µg
Target:	SSRP1
Reactivity:	Human
Host:	Mouse
Clonality:	Monoclonal
Application:	Biochemical Assay (BCA)

Product Details

Clone:	3E4
Isotype:	IgG1 kappa
Purification:	The antibody was purified by affinity chromatography.

Target Details

Target:	SSRP1
Alternative Name:	SSRP1 (SSRP1 Products)
Background:	SSRP1 is a nuclear protein and a component of the FACT complex (facilitates chromatin transcription). The FACT140 complex is composed of the Spt16 and the SSRP1 proteins. This complex interacts with nucleosomes and histone H2A/H2B dimers to promote nucleosome disassembly and allow transcription elongation. This protein interacts with dsDNA. The SSRP1 protein has been shown to be modified by cisplatin and may protect DNA from repair and block DNA replication. The 3E4 monoclonal antibody recognizes human SSRP1 and has been shown

Target Details

to be useful for Western blotting.

Pathways: [Chromatin Binding](#)

Application Details

Application Notes: Optimal working dilution should be determined by the investigator.

Restrictions: For Research Use only

Handling

Concentration: 0.5 mg/mL

Buffer: phosphate-buffered solution, pH 7.2, containing 0.09 % sodium azide at 0.5 mg/mL.

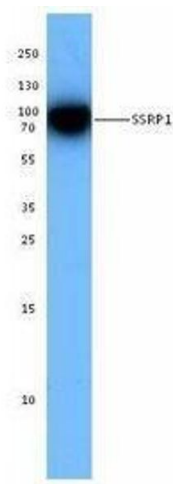
Preservative: Sodium azide

Precaution of Use: This product contains Sodium azide: a POISONOUS AND HAZARDOUS SUBSTANCE which should be handled by trained staff only.

Storage: 4 °C

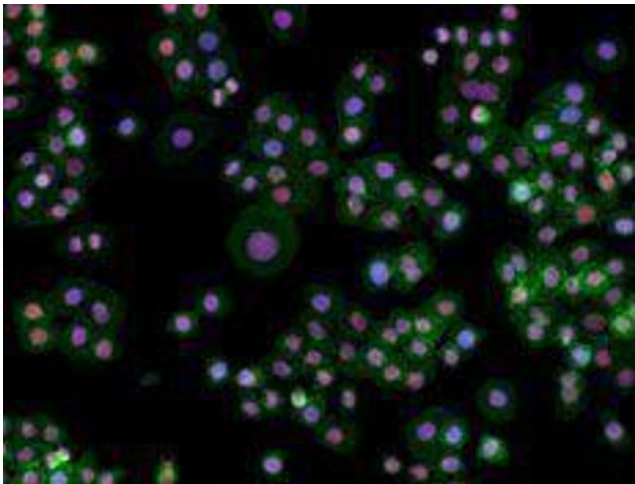
Storage Comment: Upon receipt, store undiluted between 2°C and 8°C.

Images



Western Blotting

Image 1.



Immunofluorescence

Image 2.