

Datasheet for ABIN2666368

**anti-SSRP1 antibody****2** Images[Go to Product page](#)

## Overview

Quantity:	100 µg
Target:	SSRP1
Reactivity:	Human
Host:	Mouse
Clonality:	Monoclonal
Application:	Flow Cytometry (FACS)

## Product Details

Clone:	10D1
Isotype:	IgG2b kappa
Purification:	The antibody was purified by affinity chromatography.

## Target Details

Target:	SSRP1
Alternative Name:	SSRP1 ( <a href="#">SSRP1 Products</a> )
Background:	SSRP1 is a nuclear protein and a component of the FACT complex (facilitates chromatin transcription). The FACT complex is composed of the SUPT16H (FACT140) and the SSRP1 FACTp80 proteins. This complex interacts with nucleosomes and histone H2A/H2B dimers to promote nucleosome disassembly and allow transcription elongation. This protein interacts with dsDNA. The SSRP1 protein has been shown to be modified by cisplatin and may protect DNA from repair and block DNA replication. The 10D1 monoclonal antibody recognizes the

## Target Details

human SSRP1 protein and has been shown to be useful for Western blotting.

Pathways: [Chromatin Binding](#)

## Application Details

Application Notes: Optimal working dilution should be determined by the investigator.

Restrictions: For Research Use only

## Handling

Concentration: 0.5 mg/mL

Buffer: phosphate-buffered solution, pH 7.2, containing 0.09 % sodium azide at 0.5 mg/mL.

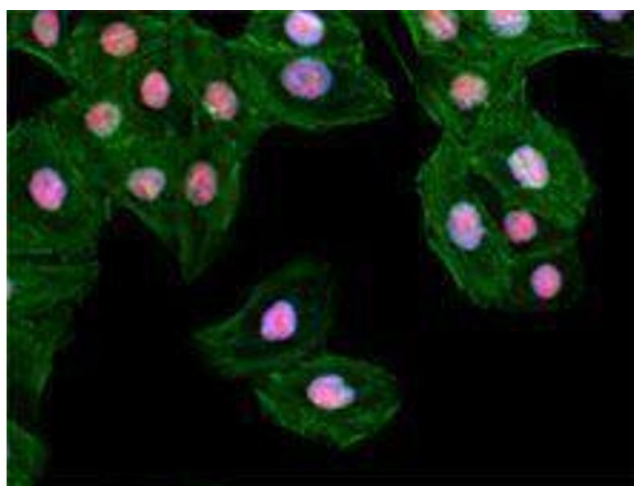
Preservative: Sodium azide

Precaution of Use: This product contains Sodium azide: a POISONOUS AND HAZARDOUS SUBSTANCE which should be handled by trained staff only.

Storage: 4 °C

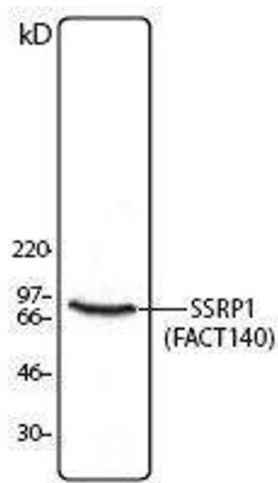
Storage Comment: Upon receipt, store undiluted between 2°C and 8°C.

## Images



### Immunofluorescence

Image 1.



Western Blotting

Image 2.