

Datasheet for ABIN2666376

anti-TRIM antibody (AA 29-186)[Go to Product page](#)**1** Image

Overview

Quantity:	100 µg
Target:	TRIM (TRAT1)
Binding Specificity:	AA 29-186
Reactivity:	Human
Host:	Mouse
Clonality:	Monoclonal
Conjugate:	This TRIM antibody is un-conjugated
Application:	Intracellular Flow Cytometry (ICFC)

Product Details

Clone:	TRIM-4
Isotype:	IgG2a, IgG2a kappa
Purification:	The antibody was purified by affinity chromatography.

Target Details

Target:	TRIM (TRAT1)
Alternative Name:	TRIM (TRAT1 Products)
Background:	<p>TRIM is a 30 kD disulfide-linked protein also known as T cell receptor interacting molecule.</p> <p>TRIM is a type III membrane protein containing a very short extracellular domain (8 amino acids). TRIM is highly expressed in T cells with some expression also observed in NK cells.</p> <p>TRIM is a signaling adaptor molecule that links extracellular and intracellular signaling. The</p>

Target Details

TRIM protein is phosphorylated by Src kinases and associates with the PI3K regulatory subunit α after phosphorylation. TRIM has also been shown to associate with TCR α , β , and ζ . The TRIM-4 monoclonal antibody recognizes human TRIM and has been shown to be useful for Western blotting, intracellular staining by flow cytometry, and immunofluorescence staining.

Pathways: [TCR Signaling](#), [Fc-epsilon Receptor Signaling Pathway](#), [EGFR Signaling Pathway](#), [Neurotrophin Signaling Pathway](#)

Application Details

Application Notes: Optimal working dilution should be determined by the investigator.

Restrictions: For Research Use only

Handling

Concentration: 0.5 mg/mL

Buffer: phosphate-buffered solution, pH 7.2, containing 0.09 % sodium azide.

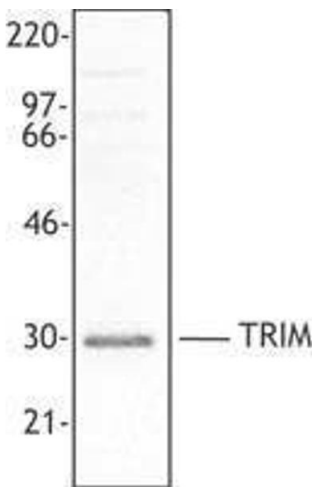
Preservative: Sodium azide

Precaution of Use: This product contains Sodium azide: a POISONOUS AND HAZARDOUS SUBSTANCE which should be handled by trained staff only.

Storage: 4 °C

Storage Comment: Upon receipt, store undiluted between 2°C and 8°C.

Images



Western Blotting

Image 1.