



[Go to Product page](#)

Datasheet for ABIN2666377
anti-gamma Tubulin antibody

2 Images

Overview

Quantity:	25 µg
Target:	gamma Tubulin (TUBG)
Reactivity:	Mouse, Human, Rat
Host:	Mouse
Clonality:	Monoclonal
Conjugate:	This gamma Tubulin antibody is un-conjugated
Application:	Intracellular Flow Cytometry (ICFC)

Product Details

Clone:	14C11
Isotype:	IgG2b kappa
Purification:	The antibody was purified by affinity chromatography.

Target Details

Target:	gamma Tubulin (TUBG)
Alternative Name:	Tubulin-gamma (TUBG Products)
Background:	<p>γ-tubulin is a 51 kD member of the tubulin superfamily and is conserved between yeast and mammals. This cytoskeletal protein is highly expressed in centrosomes and is thought to be involved in cytoskeletal organization and mitosis. γ-tubulin is expressed at highest levels during prophase to metaphase and can be modified by phosphorylation. This protein has been shown to interact with α-tubulin, paxillin, and RAC GTPase activated protein 1.</p>

Application Details

Application Notes: Optimal working dilution should be determined by the investigator.

Restrictions: For Research Use only

Handling

Concentration: 0.5 mg/mL

Buffer: phosphate-buffered solution, pH 7.2, containing 0.09 % sodium azide at 0.5 mg/mL.

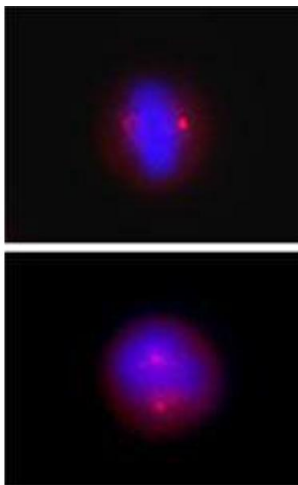
Preservative: Sodium azide

Precaution of Use: This product contains Sodium azide: a POISONOUS AND HAZARDOUS SUBSTANCE which should be handled by trained staff only.

Storage: 4 °C

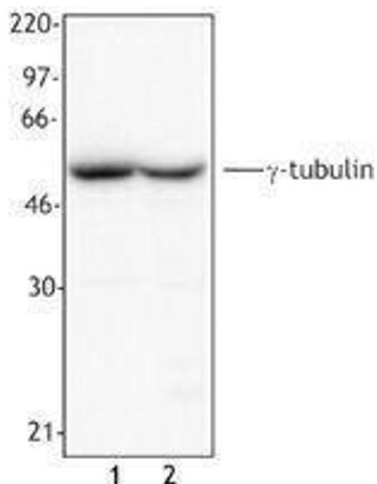
Storage Comment: Upon receipt, store undiluted between 2°C and 8°C.

Images



Immunofluorescence

Image 1.



Western Blotting

Image 2.