

Datasheet for ABIN2667054

Mouse anti-Human IgE Antibody (PerCP-Cy5.5)[Go to Product page](#)**2** Images

Overview

Quantity:	100 tests
Target:	IgE
Reactivity:	Human
Host:	Mouse
Clonality:	Monoclonal
Conjugate:	PerCP-Cy5.5
Application:	Flow Cytometry (FACS)

Product Details

Clone:	MHE-18
Isotype:	IgG1 kappa
Purification:	The antibody was purified by affinity chromatography and conjugated with PerCP/Cy5.5 under optimal conditions. The solution is free of unconjugated PerCP/Cy5.5 and unconjugated antibody.

Target Details

Target:	IgE
Abstract:	IgE Products
Background:	IgE is the seventh immunoglobulin made by B cells in the immune response.

Application Details

Application Notes: Optimal working dilution should be determined by the investigator.

Restrictions: For Research Use only

Handling

Buffer: Phosphate-buffered solution, pH 7.2, containing 0.09 % sodium azide and 0.2 % (w/v) BSA .

Preservative: Sodium azide

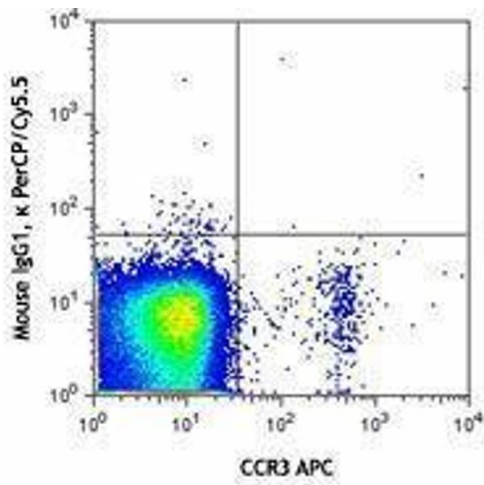
Precaution of Use: This product contains Sodium azide: a POISONOUS AND HAZARDOUS SUBSTANCE which should be handled by trained staff only.

Handling Advice: Protect from prolonged exposure to light. Do not freeze.

Storage: 4 °C

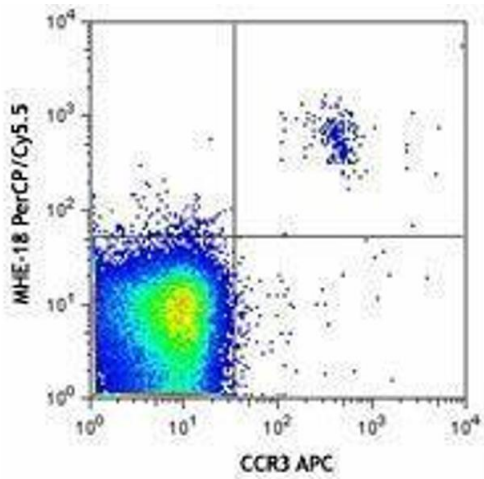
Storage Comment: The antibody solution should be stored undiluted between 2°C and 8°C.

Images



Flow Cytometry

Image 1.



Flow Cytometry

Image 2.