



[Go to Product page](#)

Datasheet for ABIN2667178

Mouse anti-Human IgM Antibody (Pacific Blue)

2 Images

Overview

Quantity:	100 µg
Target:	IgM
Reactivity:	Human
Host:	Mouse
Clonality:	Monoclonal
Conjugate:	Pacific Blue
Application:	Intracellular Flow Cytometry (ICFC), Cytometry by Time of Flight (CyTOF)

Product Details

Clone:	MHM-88
Isotype:	IgG1 kappa
Purification:	The antibody was purified by affinity chromatography, and conjugated with Pacific Blue™ under optimal conditions. The solution is free of unconjugated Pacific Blue™.

Target Details

Target:	IgM
Abstract:	IgM Products
Target Type:	Antibody
Background:	IgM is the first immunoglobulin made by B cells in the immune response. Surface IgM is expressed on immature and mature B cells, while IgM heavy (µ) chain is expressed intracellularly in pre-B cells.

Application Details

Application Notes: Optimal working dilution should be determined by the investigator.

Restrictions: For Research Use only

Handling

Concentration: 0.5 mg/mL

Buffer: Phosphate-buffered solution, pH 7.2, containing 0.09 % sodium azide.

Preservative: Sodium azide

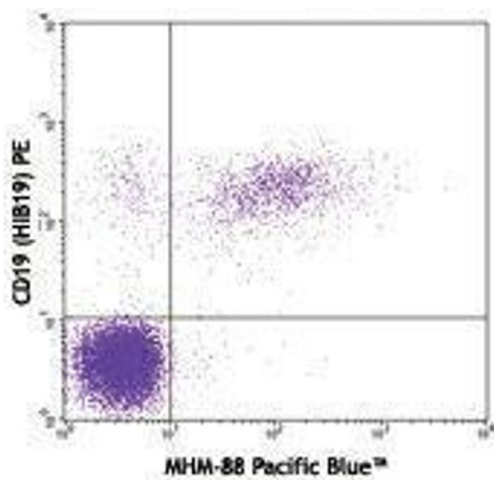
Precaution of Use: This product contains Sodium azide: a POISONOUS AND HAZARDOUS SUBSTANCE which should be handled by trained staff only.

Handling Advice: Protect from prolonged exposure to light. Do not freeze.

Storage: 4 °C

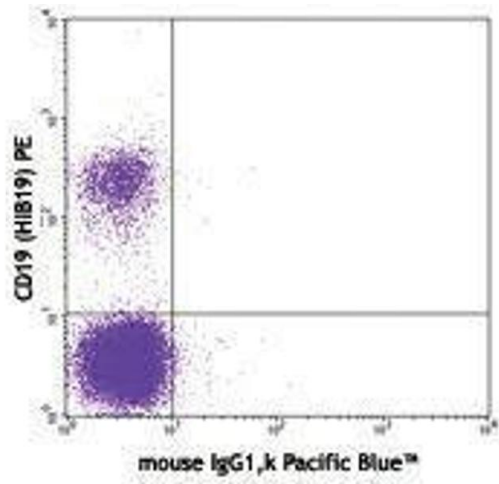
Storage Comment: The antibody solution should be stored undiluted between 2°C and 8°C.

Images



Flow Cytometry

Image 1.



Flow Cytometry

Image 2.