

Datasheet for ABIN2667245

**Rat anti-Mouse IgD Antibody (Alexa Fluor 700)****2** Images[Go to Product page](#)

## Overview

Quantity:	100 µg
Target:	IgD
Reactivity:	Mouse
Host:	Rat
Clonality:	Monoclonal
Conjugate:	Alexa Fluor 700
Application:	Flow Cytometry (FACS)

## Product Details

Clone:	11-26c-2a
Isotype:	IgG2a kappa
Purification:	The antibody was purified by affinity chromatography and conjugated with Alexa Fluor® 700 under optimal conditions.

## Target Details

Target:	IgD
Abstract:	<a href="#">IgD Products</a>
Target Type:	Antibody
Background:	Surface IgD is an important B cell differentiation marker.

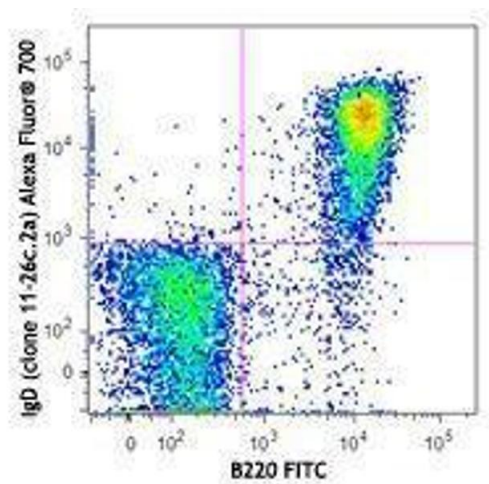
## Application Details

Application Notes:	Optimal working dilution should be determined by the investigator.
Restrictions:	For Research Use only

## Handling

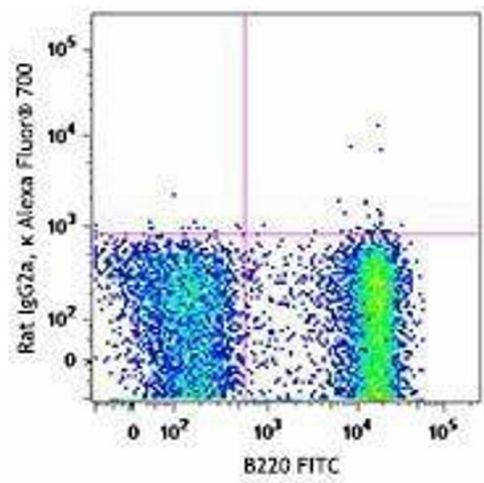
Concentration:	0.5 mg/mL
Buffer:	Phosphate-buffered solution, pH 7.2, containing 0.09 % sodium azide.
Preservative:	Sodium azide
Precaution of Use:	This product contains Sodium azide: a POISONOUS AND HAZARDOUS SUBSTANCE which should be handled by trained staff only.
Handling Advice:	Protect from prolonged exposure to light. Do not freeze.
Storage:	4 °C
Storage Comment:	The antibody solution should be stored undiluted between 2°C and 8°C.

## Images



### Flow Cytometry

Image 1.



## Flow Cytometry

Image 2.