

Datasheet for ABIN2667249

**Mouse anti-Human IgD Antibody (Alexa Fluor 488)****2** Images[Go to Product page](#)

## Overview

Quantity:	100 tests
Target:	IgD
Reactivity:	Human
Host:	Mouse
Clonality:	Monoclonal
Conjugate:	Alexa Fluor 488
Application:	ELISA

## Product Details

Clone:	IA6-2
Isotype:	IgG2a kappa
Purification:	The antibody was purified by affinity chromatography, and conjugated with Alexa Fluor® 488 under optimal conditions.

## Target Details

Target:	IgD
Abstract:	<a href="#">IgD Products</a>
Target Type:	Antibody
Background:	IgD, a member of the immunoglobulin (Ig) family, is expressed in naive B cells. It has 3 Ig-like domains and exists in a transmembrane and a soluble form. In general, IgD is not secreted and usually its expression is lost after the Ig isotype switch. After antigen binding, IgD signals

Target Details

through the CD79a/CD79b (Igα/Igβ) heterodimer, resulting in the activation of the B cell.

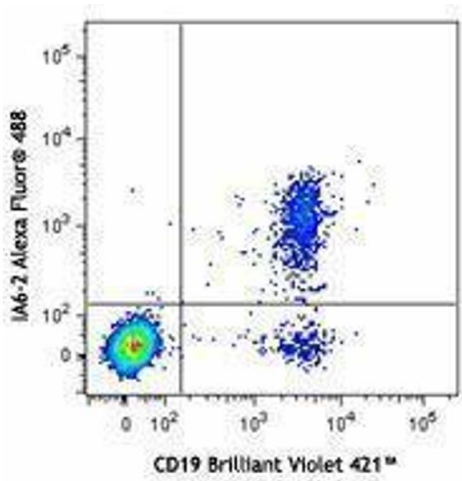
Application Details

Application Notes:	Optimal working dilution should be determined by the investigator.
Restrictions:	For Research Use only

Handling

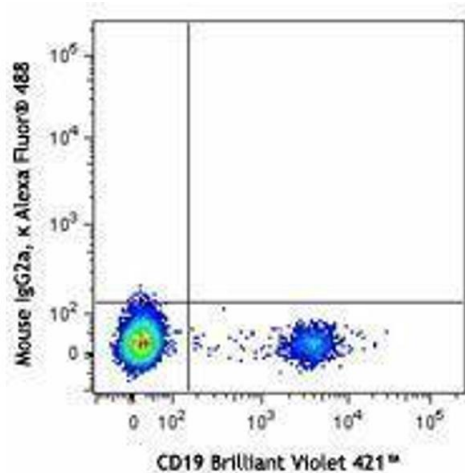
Buffer:	Phosphate-buffered solution, pH 7.2, containing 0.09 % sodium azide and 0.2 % (w/v) BSA .
Preservative:	Sodium azide
Precaution of Use:	This product contains Sodium azide: a POISONOUS AND HAZARDOUS SUBSTANCE which should be handled by trained staff only.
Handling Advice:	Protect from prolonged exposure to light. Do not freeze.
Storage:	4 °C
Storage Comment:	The antibody solution should be stored undiluted between 2°C and 8°C.

Images



Flow Cytometry

Image 1.



## Flow Cytometry

Image 2.