



[Go to Product page](#)

Datasheet for ABIN2668357  
**anti-SIN3A antibody (N-Term)**

2 Images

1 Publication

### Overview

Quantity:	100 µL
Target:	SIN3A
Binding Specificity:	N-Term
Reactivity:	Human, Mouse
Host:	Rabbit
Clonality:	Polyclonal
Conjugate:	This SIN3A antibody is un-conjugated
Application:	Western Blotting (WB), Chromatin Immunoprecipitation (ChIP)

### Product Details

Immunogen:	This SIN3A antibody was raised against a peptide derived from the N-terminus of human SIN3A.
Purification:	None

### Target Details

Target:	SIN3A
Alternative Name:	SIN3A ( <a href="#">SIN3A Products</a> )
Molecular Weight:	155 kDa
Gene ID:	25942
Pathways:	<a href="#">Activation of Innate immune Response</a> , <a href="#">Carbohydrate Homeostasis</a> , <a href="#">Chromatin Binding</a> ,

## Target Details

### Regulation of Lipid Metabolism by PPARalpha

## Application Details

Application Notes: Optimal working dilution should be determined by the investigator.

Restrictions: For Research Use only

## Handling

Format: Liquid

Preservative: Sodium azide

Precaution of Use: This product contains Sodium azide: a POISONOUS AND HAZARDOUS SUBSTANCE which should be handled by trained staff only.

Handling Advice: Avoid repeated freeze/thaw cycles and keep on ice when not in storage.

Storage: -20 °C

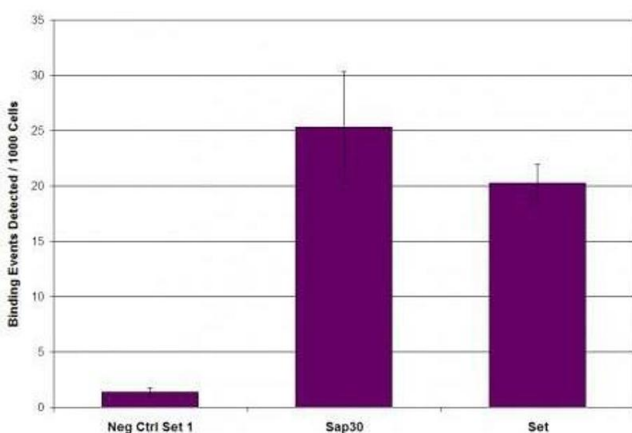
Storage Comment: Antibodies in solution can be stored at -20 °C for 2 years.

Expiry Date: 6 months

## Publications

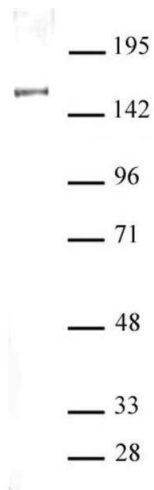
Product cited in: Harada, Okada, Saiwai, Aoki, Nakamura, Ohkawa: "Generation of a rat monoclonal antibody specific for Pax7." in: **Hybridoma (2005)**, Vol. 28, Issue 6, pp. 451-3, (2009) ([PubMed](#)).

## Images



### Chromatin Immunoprecipitation

**Image 1.** SIN3A antibody (pAb) tested by ChIP. Chromatin immunoprecipitation (ChIP) was performed using the ChIP-IT® High Sensitivity Kit (Cat. No. 53040) with 30 µg of chromatin from TM4 Sertoli cells and 5 µl of SIN3A antibody. ChIP DNA was used in qPCR with the control primer pairs or gene-specific primer pairs as indicated. Data are presented as Binding Events Detected per 1000 Cells using Active Motif's Epigenetic Services normalization



scheme which accounts for primer efficiency and the amount of chromatin used in the ChIP reaction.

### Western Blotting

**Image 2.** SIN3A antibody (pAb) tested by Western blot. Nuclear extract of HeLa cells (20  $\mu$ g) probed with SIN3A antibody at a dilution of 1:5,000.