

Datasheet for ABIN2668372

anti-RECQL2 antibody

3 Images

1 Publication

[Go to Product page](#)

Overview

Quantity:	100 µg
Target:	RECQL2 (WRN)
Reactivity:	Human
Host:	Mouse
Clonality:	Monoclonal
Application:	Western Blotting (WB), Immunohistochemistry (IHC), Immunofluorescence (IF), Immunocytochemistry (ICC)

Product Details

Immunogen:	This WRN antibody was raised against a recombinant protein corresponding to amino acids 1072 - 1432 of human WRN.
Clone:	195C
Isotype:	IgG1
Purification:	Protein G Chromatography

Target Details

Target:	RECQL2 (WRN)
Alternative Name:	WRN (WRN Products)
Molecular Weight:	162 kDa
Gene ID:	7486

Target Details

Pathways: [DNA Damage Repair](#)

Application Details

Application Notes: Optimal working dilution should be determined by the investigator.

Restrictions: For Research Use only

Handling

Concentration: 1 µg/µL

Preservative: Sodium azide

Precaution of Use: This product contains Sodium azide: a POISONOUS AND HAZARDOUS SUBSTANCE which should be handled by trained staff only.

Handling Advice: Avoid repeated freeze/thaw cycles and keep on ice when not in storage.

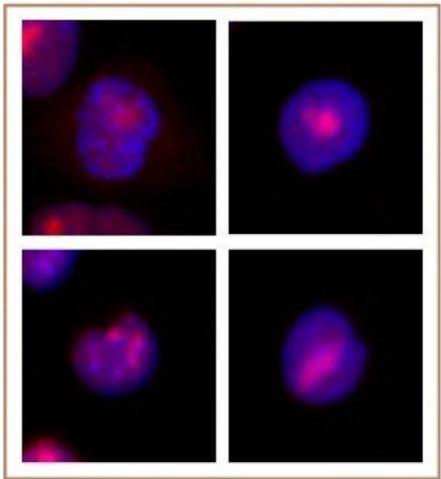
Storage: -20 °C

Storage Comment: Antibodies in solution can be stored at -20 °C for 2 years.

Expiry Date: 6 months

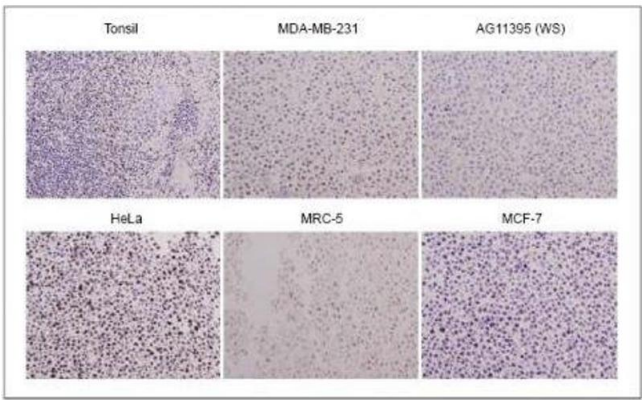
Publications

Product cited in: Rappa, Anzanello, Lorico: "Ethanol induces upregulation of the nerve growth factor receptor CD271 in human melanoma cells via nuclear factor-κB activation." in: **Oncology letters**, Vol. 10, Issue 2, pp. 815-821, (2015) ([PubMed](#)).



Immunofluorescence

Image 1. WRN antibody (mAb) tested by Immunofluorescence. Formaldehyde fixed HeLa cells stained with WRN antibody at a 0.5 µg/ml dilution.



Immunohistochemistry

Image 2. WRN antibody (mAb) tested by Immunohistochemistry. Paraffin embedded tissue samples: human tonsil, MDA-MB-231 (breast adenocarcinoma cell line), AG11395 WS (fibroblast of a patient with Werner Syndrome immortalized with SV40), HeLa cells, MRC-5 (lung fibroblast cell line), and MCF-7 (breast carcinoma cell line).



Western Blotting

Image 3. WRN antibody (mAb) tested by Western blot. Detection of WRN by Western blot. Lane 1: HeLa cell extract. Lane 2: WS cell extract (fibroblast from a patient with Werner Syndrome).