



[Go to Product page](#)

Datasheet for ABIN2668472

anti-Histone 3 antibody (H3K4me3)

5 Images

75 Publications

Overview

Quantity:	100 µL
Target:	Histone 3 (H3)
Binding Specificity:	H3K4me3
Reactivity:	Human, Mouse, Saccharomyces cerevisiae
Host:	Rabbit
Clonality:	Polyclonal
Conjugate:	This Histone 3 antibody is un-conjugated
Application:	Western Blotting (WB), Immunofluorescence (IF), Chromatin Immunoprecipitation (ChIP), Dot Blot (DB), ChIP DNA-Sequencing (ChIP-seq), Immunocytochemistry (ICC), Cleavage Under Targets and Release Using Nuclease (CUT&RUN), Cleavage Under Targets and Tagmentation (CUT&Tag)

Product Details

Immunogen:	This Histone H3 trimethylLys4 antibody was raised against a peptide including trimethyllysine 4 of histone H3.
Purification:	None

Target Details

Target:	Histone 3 (H3)
Alternative Name:	Histone H3 (H3 Products)
Molecular Weight:	17 kDa

Target Details

Gene ID: 3020

Application Details

Application Notes: Optimal working dilution should be determined by the investigator.

Restrictions: For Research Use only

Handling

Format: Liquid

Preservative: Sodium azide

Precaution of Use: This product contains Sodium azide: a POISONOUS AND HAZARDOUS SUBSTANCE which should be handled by trained staff only.

Handling Advice: Avoid repeated freeze/thaw cycles and keep on ice when not in storage.

Storage: -20 °C

Storage Comment: Antibodies in solution can be stored at -20 °C for 2 years.

Expiry Date: 6 months

Publications

Product cited in: Henikoff, Henikoff, Kaya-Okur, Ahmad: "Efficient chromatin accessibility mapping in situ by nucleosome-tethered tagmentation." in: **eLife**, Vol. 9, (2020) ([PubMed](#)).

Brahma, Henikoff: "RSC-Associated Subnucleosomes Define MNase-Sensitive Promoters in Yeast." in: **Molecular cell**, Vol. 73, Issue 2, pp. 238-249.e3, (2019) ([PubMed](#)).

Pan, Guan, Liu, Li, Wang, Wu, Zhou, Zhang, Ren, Zhang, Li, Yang, Hao, Yuan, Yuan, Wang, Ju, Mao, Li, Qu, Tang, Liu: "SIRT6 safeguards human mesenchymal stem cells from oxidative stress by coactivating NRF2." in: **Cell research**, Vol. 26, Issue 2, pp. 190-205, (2016) ([PubMed](#)).

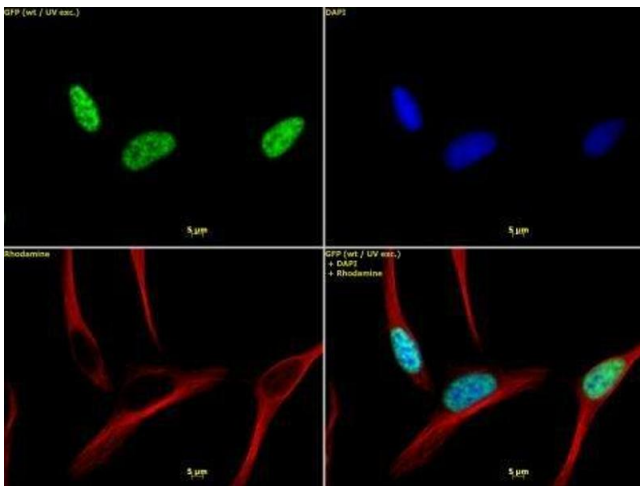
Toth, Papp, Brulois, Choi, Gao, Jung: "LANA-Mediated Recruitment of Host Polycomb Repressive Complexes onto the KSHV Genome during De Novo Infection." in: **PLoS pathogens**, Vol. 12, Issue 9, pp. e1005878, (2016) ([PubMed](#)).

Lowe, Gemma, Rakyán, Holland: "Sexually dimorphic gene expression emerges with embryonic

genome activation and is dynamic throughout development." in: **BMC genomics**, Vol. 16, pp. 295, (2015) ([PubMed](#)).

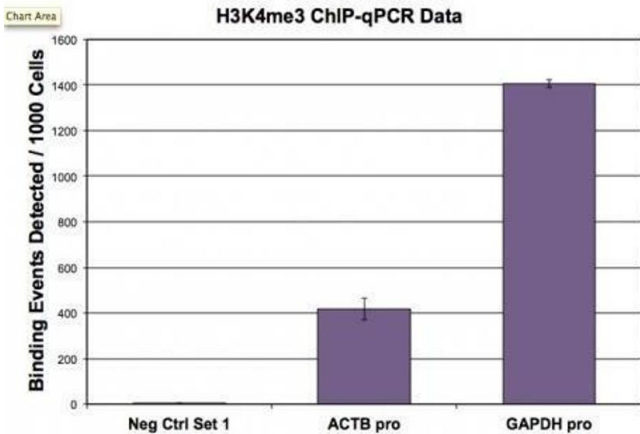
There are more publications referencing this product on: [Product page](#)

Images



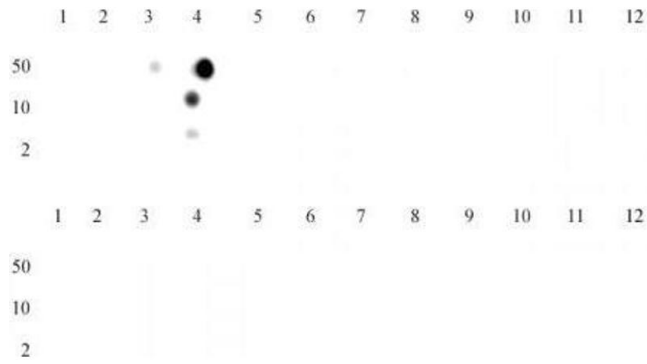
Immunofluorescence

Image 1. Histone H3 trimethyl Lys4 antibody tested by immunofluorescence. HeLa cells stained at 1:1,000 with Histone H3 trimethyl Lys4 antibody. Top left: Histone H3 trimethyl Lys4 antibody. Top right: Stained with DAPI. Bottom left: Same cells stained with alpha Tubulin mAb (Clone 5-B-1-2). Bottom right: Merge of all 3 images.



Chromatin Immunoprecipitation

Image 2. Histone H3 trimethyl Lys4 antibody (pAb) tested by ChIP. Chromatin immunoprecipitation (ChIP) was performed using the ChIP-IT® High Sensitivity Kit (Cat. No. 53040) with 2 million HL-60 cells and 3 µl of Histone H3 trimethyl Lys4 antibody. ChIP DNA was used in qPCR with the negative control primer pairs or gene-specific primer pairs as indicated. Data are presented as Binding Events Detected per 1000 Cells using Active Motif’s Epigenetic Services normalization scheme which accounts for primer efficiency and the amount of chromatin used in the ChIP reaction.



Dot Blot

Image 3. Histone H3 trimethyl Lys4 antibody tested by dot blot analysis. Dot blot analysis was used to confirm the specificity of Histone H3 trimethyl Lys4 antibody for trimethyl-lysine 4 of histone H3. Peptides corresponding to regions around major sites of histone H3 methylation (lysine 4, lysine 9, lysine 27) were spotted onto PVDF and probed with the antibody at a dilution of 1:5,000. The amount of peptide (in picomoles) spotted is indicated next to each row. Top panel - Lane 1: unmodified H3K4. Lane 2: H3K4me1. Lane 3: H3K4me2. Lane 4: H3K4me3. Lane 5: unmodified H3K9. Lane 6: H3K9me1. Lane 7: H3K9me2. Lane 8: H3K9me3. Lane 9: unmodified H3K79. Lane 10: H3K79me1. Lane 11: H3K79me2. Lane 12: H3K79me3. Bottom panel - Lane 1: unmodified H3K23. Lane 2: H3K23me1. Lane 3: H3K23me3. Lane 4: H3K23me3. Lane 5: unmodified H3K27. Lane 6: H3K27me1. Lane 7: H3K27me2. Lane 8: H3K27me3. Lane 9: unmodified H3K36. Lane 10: H3K36me1. Lane 11: H3K36me2. Lane 12: H3K36me3.

Please check the [product details page](#) for more images. Overall 5 images are available for ABIN2668472.