

Datasheet for ABIN2668494
anti-MLL/KMT2A antibody (AA 2829-2883)[Go to Product page](#)

2 Images

5 Publications

Overview

Quantity:	100 µg
Target:	MLL/KMT2A (MLL)
Binding Specificity:	AA 2829-2883
Reactivity:	Human, Mouse
Host:	Rabbit
Clonality:	Polyclonal
Application:	Western Blotting (WB), Chromatin Immunoprecipitation (ChIP), Immunocytochemistry (ICC), ChIP DNA-Sequencing (ChIP-seq), Immunofluorescence (IF)

Product Details

Immunogen:	This MLL / HRX antibody was raised against a recombinant protein corresponding to amino acids 2829-2883 of human MLL.
Isotype:	IgG
Purification:	Protein A Chromatography

Target Details

Target:	MLL/KMT2A (MLL)
Alternative Name:	MLL / HRX (MLL Products)
Molecular Weight:	180 kDa
Gene ID:	4297

Target Details

Pathways: [Warburg Effect](#)

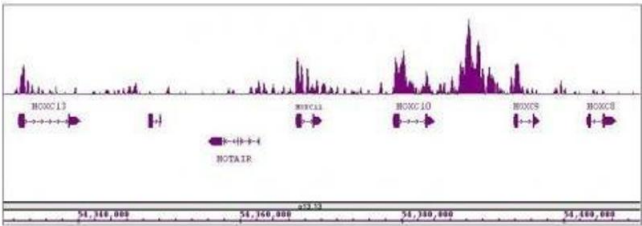
Application Details

Application Notes:	Optimal working dilution should be determined by the investigator.
Restrictions:	For Research Use only
Handling	
Concentration:	1 µg/µL
Preservative:	Sodium azide
Precaution of Use:	This product contains Sodium azide: a POISONOUS AND HAZARDOUS SUBSTANCE which should be handled by trained staff only.
Handling Advice:	Avoid repeated freeze/thaw cycles and keep on ice when not in storage.
Storage:	-20 °C
Storage Comment:	Antibodies in solution can be stored at -20 °C for 2 years.
Expiry Date:	6 months

Publications

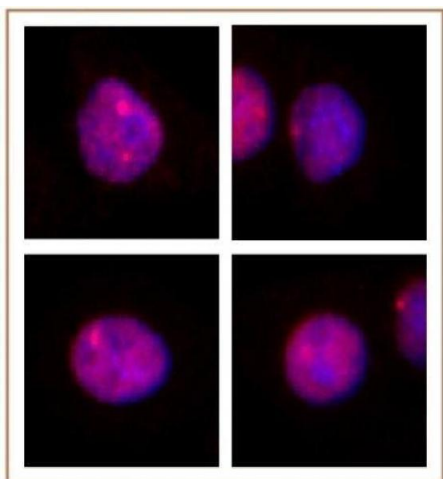
Product cited in: Kahana, Gottschling: "DOT4 links silencing and cell growth in *Saccharomyces cerevisiae*." in: **Molecular and cellular biology**, Vol. 19, Issue 10, pp. 6608-20, (2000) ([PubMed](#)).

Images



ChIP DNA-Sequencing

Image 1. MLL / HRX antibody (pAb) tested by ChIP-Seq. ChIP was performed using the ChIP-IT® High Sensitivity Kit (Cat. No. 53040) with 30 µg of chromatin from HeLa cells and 4 µg of antibody. ChIP DNA was sequenced on the Illumina HiSeq and 20 million sequence tags were mapped to identify MLL / HRX binding sites. The image shows binding across a region of chromosome 12. You can view the complete data set in the UCSC Genome Browser,



starting at this specific location, here.

Immunofluorescence

Image 2. MLL / HRX antibody (pAb) tested by Immunofluorescence. Formaldehyde fixed HeLa cells stained with MLL / HRX antibody at a 0.5 µg/ml dilution.