



[Go to Product page](#)

Datasheet for ABIN2668513

anti-TET3 antibody (AA 1159-1329)

1 Image

2 Publications

Overview

Quantity:	100 µL
Target:	TET3
Binding Specificity:	AA 1159-1329
Reactivity:	Mouse
Host:	Rabbit
Clonality:	Polyclonal
Conjugate:	This TET3 antibody is un-conjugated
Application:	Western Blotting (WB)

Product Details

Immunogen:	This antibody was raised against a recombinant protein corresponding to amino acids 1159-1329 of mouse Tet3.
Purification:	None

Target Details

Target:	TET3
Alternative Name:	Tet3 (TET3 Products)
Molecular Weight:	200 kDa
Gene ID:	194388
Pathways:	Warburg Effect

Application Details

Application Notes: Optimal working dilution should be determined by the investigator.

Restrictions: For Research Use only

Handling

Format: Liquid

Buffer: Rabbit serum containing 30 % glycerol and 0.035 % sodium azide.

Preservative: Sodium azide

Precaution of Use: This product contains Sodium azide: a POISONOUS AND HAZARDOUS SUBSTANCE which should be handled by trained staff only.

Handling Advice: Avoid repeated freeze/thaw cycles and keep on ice when not in storage.

Storage: -20 °C

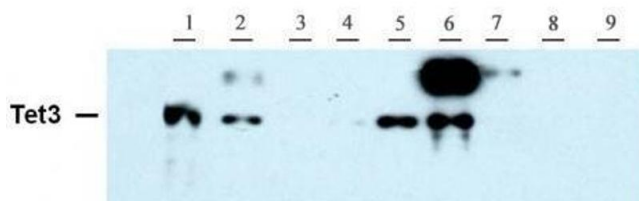
Storage Comment: Antibodies in solution can be stored at -20 °C for 2 years.

Expiry Date: 6 months

Publications

Product cited in: Harada, Okada, Saiwai, Aoki, Nakamura, Ohkawa: "Generation of a rat monoclonal antibody specific for Pax7." in: **Hybridoma (2005)**, Vol. 28, Issue 6, pp. 451-3, (2009) ([PubMed](#)).

Images



Western Blotting

Image 1. Tet3 antibody (pAb) tested by Western blot. The blot was probed with Tet3 antibody at a dilution of 1:5,000. Lane 1: 293T cells transfected with Tet3. Lane 2: Mouse lung. Lane 3: Mouse muscle. Lane 4: Mouse ovary. Lane 5: Mouse spleen. Lane 6: Mouse testes. Lane 7: Mouse thymus. Lane 8: 293T cells transfected with Tet1. Lane 9: 293T cells transfected with Tet2.