



Datasheet for ABIN2668520

## anti-Rpb1 CTD antibody (pSer5, Ser5)



[Go to Product page](#)

4 Images

3 Publications

### Overview

Quantity:	100 µg
Target:	Rpb1 CTD
Binding Specificity:	pSer5, Ser5
Reactivity:	Human, Mouse
Host:	Rabbit
Clonality:	Polyclonal
Application:	Western Blotting (WB), Chromatin Immunoprecipitation (ChIP), ChIP DNA-Sequencing (ChIP-seq)

### Product Details

Immunogen:	This RNA pol II CTD pSer5 antibody was raised against synthetic peptide containing the RNA Pol II heptad repeat consensus sequence phosphorylated at serine 5.
Isotype:	IgG
Purification:	Protein A Chromatography

### Target Details

Target:	Rpb1 CTD
Alternative Name:	RNA Pol II CTD ( <a href="#">Rpb1 CTD Products</a> )
Molecular Weight:	210 kDa
Gene ID:	5430

## Application Details

---

Application Notes: Optimal working dilution should be determined by the investigator.

Restrictions: For Research Use only

## Handling

---

Concentration: 1 µg/µL

Preservative: Sodium azide

Precaution of Use: This product contains Sodium azide: a POISONOUS AND HAZARDOUS SUBSTANCE which should be handled by trained staff only.

Handling Advice: Avoid repeated freeze/thaw cycles and keep on ice when not in storage.

Storage: -20 °C

Storage Comment: Antibodies in solution can be stored at -20 °C for 2 years.

Expiry Date: 6 months

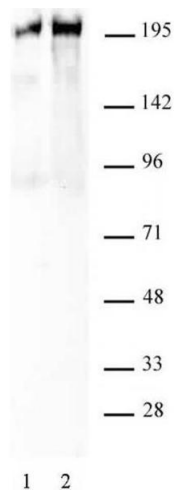
## Publications

---

Product cited in: Jia, Li, Cong, Yang, Sun, Parvizi, Zhao: "Maternal low-protein diet affects epigenetic regulation of hepatic mitochondrial DNA transcription in a sex-specific manner in newborn piglets associated with GR binding to its promoter." in: **PLoS ONE**, Vol. 8, Issue 5, pp. e63855, (2013) ([PubMed](#)).

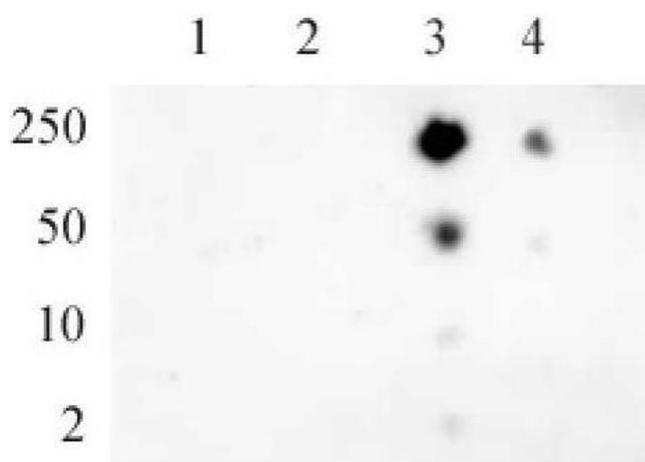
Li, O'Neill: "5'-Methylcytosine and 5'-hydroxymethylcytosine each provide epigenetic information to the mouse zygote." in: **PLoS ONE**, Vol. 8, Issue 5, pp. e63689, (2013) ([PubMed](#)).

Li, Zou, Jia, Zhao: "Glucocorticoid receptor is involved in the breed-dependent transcriptional regulation of mtDNA- and nuclear-encoded mitochondria genes in the liver of newborn piglets." in: **BMC veterinary research**, Vol. 9, pp. 87, (2013) ([PubMed](#)).



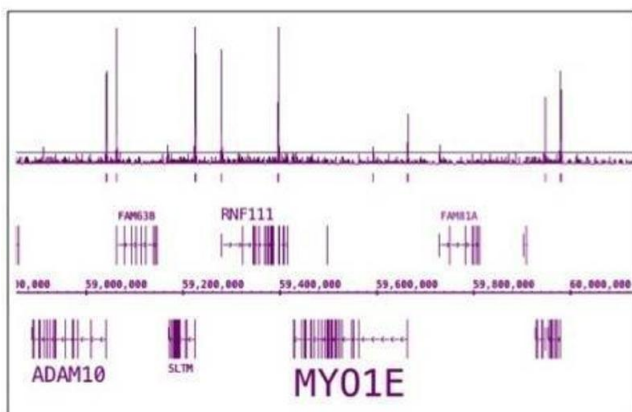
### Western Blotting

**Image 1.** RNA pol II CTD phospho Ser5 antibody tested by Western blot. Nuclear extract of HeLa cells (20 µg) probed with RNA pol II CTD phospho Ser5 antibody at a dilution of 0.5 µg/ml.



### Dot Blot

**Image 2.** RNA pol II CTD phospho Ser5 pAb tested by dot blot analysis. Dot blot analysis was used to confirm the specificity of RNA pol II CTD phospho Ser5 antibody for phospho-Ser5 of the RNA Pol II C-terminal domain heptad repeat. Modified and unmodified peptides were spotted onto PVDF and probed with the antibody at a dilution of 0.2 µg/ml. Decreasing amounts of peptide were spotted in each row. Lane 1: Peptide phosphorylated at CTD repeat serine 2. Lane 2: Unmodified CTD repeat serine 2 peptide. Lane 3: Peptide phosphorylated at CTD repeat serine 5. Lane 4: Unmodified CTD repeat serine 5 peptide.



### ChIP DNA-Sequencing

**Image 3.** RNA pol II CTD phospho Ser5 antibody (pAb) tested by ChIP-Seq. ChIP was performed using the ChIP-IT® High Sensitivity Kit (Cat. No. 53040) with chromatin from 2.3 million HL-60 cells and 4 µl of antibody. ChIP DNA was sequenced on the Illumina HiSeq and 26 million sequence tags were mapped to identify RNA pol II phospho Ser5 binding. The image shows a 1.2 million base pair region on chromosome 15 with the expected enrichment at gene promoters.

Please check the [product details page](#) for more images. Overall 4 images are available for ABIN2668520.