

Datasheet for ABIN2668523

anti-POLR2F antibody

2 Images

20 Publications

[Go to Product page](#)

Overview

Quantity:	200 µL
Target:	POLR2F
Reactivity:	Human, Rat, Mouse, C. elegans, Saccharomyces cerevisiae
Host:	Mouse
Clonality:	Monoclonal
Application:	Western Blotting (WB), Immunofluorescence (IF), Chromatin Immunoprecipitation (ChIP), ChIP DNA-Sequencing (ChIP-seq), Immunocytochemistry (ICC)

Product Details

Immunogen:	This RNA pol II antibody was raised against a synthetic peptide YSPTSpPS corresponding to human RNA pol II. It recognizes both the phosphorylated and unphosphorylated forms of the largest subunit of RNA pol II.
Clone:	4H8
Isotype:	IgG
Purification:	Affinity Purified

Target Details

Target:	POLR2F
Alternative Name:	RNA Pol II (POLR2F Products)
Molecular Weight:	217 kDa
Gene ID:	5430

Target Details

Pathways: [Regulatory RNA Pathways](#)

Application Details

Application Notes: Optimal working dilution should be determined by the investigator.

Restrictions: For Research Use only

Handling

Format: Liquid

Concentration: 0.2 µg/µL

Buffer: PBS containing 0.2 % gelatin, 0.01 % thimersol and 0.1 % sodium azide. Thimersol and sodium azide are highly toxic.

Preservative: Sodium azide, Thimerosal (Merthiolate)

Precaution of Use: This product contains Sodium azide and Thimerosal (Merthiolate): POISONOUS AND HAZARDOUS SUBSTANCES which should be handled by trained staff only.

Handling Advice: Avoid repeated freeze/thaw cycles and keep on ice when not in storage.

Storage: -80 °C

Storage Comment: Antibodies in solution can be stored at -80 °C for 2 years.

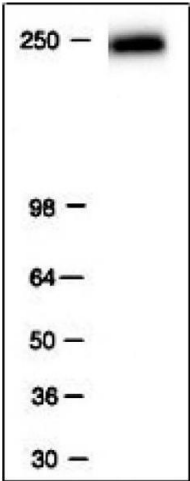
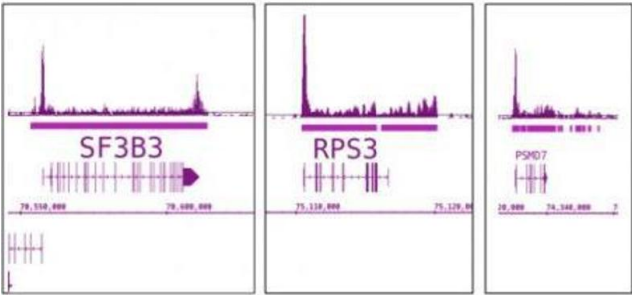
Expiry Date: 6 months

Publications

Product cited in: Narla, DiFeo, Fernandez, Dhanasekaran, Huang, Sangodkar, Hod, Leake, Friedman, Hall, Chinnaiyan, Gerald, Rubin, Martignetti: "KLF6-SV1 overexpression accelerates human and mouse prostate cancer progression and metastasis." in: **The Journal of clinical investigation**, Vol. 118, Issue 8, pp. 2711-21, (2008) ([PubMed](#)).

Narla, DiFeo, Yao, Banno, Hod, Reeves, Qiao, Camacho-Vanegas, Levine, Kirschenbaum, Chan, Friedman, Martignetti: "Targeted inhibition of the KLF6 splice variant, KLF6 SV1, suppresses prostate cancer cell growth and spread." in: **Cancer research**, Vol. 65, Issue 13, pp. 5761-8, (2005) ([PubMed](#)).

There are more publications referencing this product on: [Product page](#)



ChIP DNA-Sequencing

Image 1. RNA pol II antibody (mAb) tested by ChIP-Seq. ChIP was performed using the ChIP-IT® High Sensitivity Kit (Cat. No. 53040) with chromatin from 2.3 million HL-60 cells and 20 ul of antibody. ChIP DNA was sequenced on the Illumina HiSeq and 30 million sequence tags were mapped to identify Pol II binding. ChIP-Seq data from three specific genes is shown as an example. Pol II binding is detected at the 5' end of the genes, throughout the gene bodies and at the 3' end of the genes.

Western Blotting

Image 2. RNA pol II antibody tested by Western blot. RNA pol II detection by Western blot analysis. RNA pol II is detected in HeLa nuclear extracts using RNA pol II mouse monoclonal antibody at a 1:2,000 dilution.