

Datasheet for ABIN2668525
anti-CHD1 antibody (AA 251-467)[Go to Product page](#)[1 Image](#)[1 Publication](#)

Overview

Quantity:	100 µL
Target:	CHD1
Binding Specificity:	AA 251-467
Reactivity:	Human
Host:	Rabbit
Clonality:	Polyclonal
Application:	Western Blotting (WB)

Product Details

Immunogen:	This CHD1 antibody was raised against a recombinant protein corresponding to amino acids 251-467 of human CHD1.
Purification:	None

Target Details

Target:	CHD1
Alternative Name:	CHD1 (CHD1 Products)
Molecular Weight:	220 kDa
Gene ID:	1105
Pathways:	Chromatin Binding

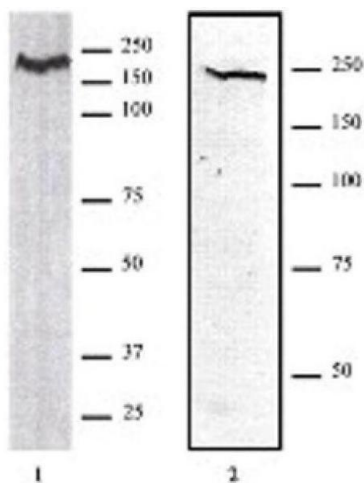
Application Details

Application Notes:	Optimal working dilution should be determined by the investigator.
Restrictions:	For Research Use only
Handling	
Format:	Liquid
Preservative:	Sodium azide
Precaution of Use:	This product contains Sodium azide: a POISONOUS AND HAZARDOUS SUBSTANCE which should be handled by trained staff only.
Handling Advice:	Avoid repeated freeze/thaw cycles and keep on ice when not in storage.
Storage:	-20 °C
Storage Comment:	Antibodies in solution can be stored at -20 °C for 2 years.
Expiry Date:	6 months

Publications

Product cited in:	Yoshimura, Takeya, Takahashi: "Molecular cloning of rat monocyte chemoattractant protein-1 (MCP-1) and its expression in rat spleen cells and tumor cell lines." in: Biochemical and biophysical research communications , Vol. 174, Issue 2, pp. 504-9, (1991) (PubMed).
-------------------	--

Images



Western Blotting

Image 1. CHD1 antibody (pAb) tested by Western blot. Detection of CHD1 by Western blot analysis. Lane 1: Nuclear extract of HeLa cells (50 µg). Lane 2: Whole cell extract of adult mouse brain. Both probed with CHD1 antibody (pAb) at a 1:1,000 dilution.