

Datasheet for ABIN2668602

anti-PIM2 antibody

2 Images



[Go to Product page](#)

Overview

Quantity:	100 µg
Target:	PIM2
Reactivity:	Human
Host:	Rat
Clonality:	Monoclonal
Application:	Western Blotting (WB), Immunohistochemistry (IHC)

Product Details

Immunogen:	This PIM2 antibody was raised against a recombinant protein corresponding to human PIM2.
Clone:	CHU61
Isotype:	IgG2a
Purification:	Protein G Chromatography

Target Details

Target:	PIM2
Alternative Name:	PIM2 (PIM2 Products)
Molecular Weight:	37 kDa
Gene ID:	11040

Application Details

Application Notes: Optimal working dilution should be determined by the investigator.

Restrictions: For Research Use only

Handling

Concentration: 1 µg/µL

Preservative: Sodium azide

Precaution of Use: This product contains Sodium azide: a POISONOUS AND HAZARDOUS SUBSTANCE which should be handled by trained staff only.

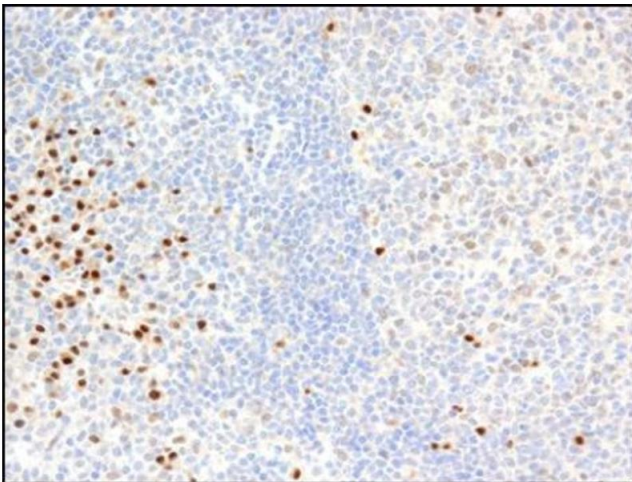
Handling Advice: Avoid repeated freeze/thaw cycles and keep on ice when not in storage.

Storage: -80 °C

Storage Comment: Antibodies in solution can be stored at -80 °C for 2 years.

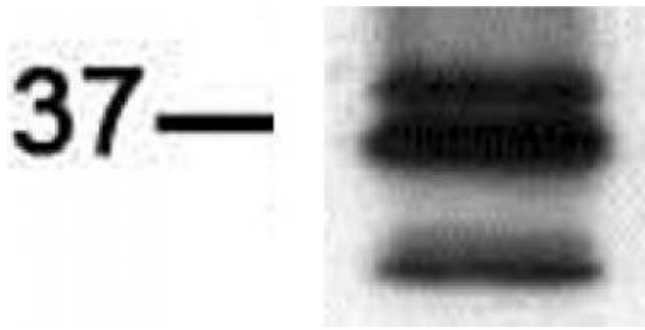
Expiry Date: 6 months

Images



Immunohistochemistry

Image 1. Immunohistochemistry using PIM2 mAb. PIM2 detected by immunohistochemistry in paraffin-embedded human tonsil cells.



Western Blotting

Image 2. Western blot of PIM2 antibody (mAb). Ramos cell extract (100 µg per lane) probed with PIM2 antibody (mAb).