

Datasheet for ABIN2668850

anti-ASH2L antibody[Go to Product page](#)[2 Images](#)[2 Publications](#)

Overview

Quantity:	100 µL
Target:	ASH2L
Reactivity:	Human
Host:	Rabbit
Clonality:	Polyclonal
Application:	Western Blotting (WB), Chromatin Immunoprecipitation (ChIP), ChIP DNA-Sequencing (ChIP-seq)

Product Details

Immunogen:	This ASH2L antibody was raised against full-length recombinant human ASH2 protein.
Purification:	None

Target Details

Target:	ASH2L
Alternative Name:	ASH2L (ASH2L Products)
Molecular Weight:	77 kDa
Gene ID:	430

Application Details

Application Notes:	Optimal working dilution should be determined by the investigator.
--------------------	--

Application Details

Restrictions: For Research Use only

Handling

Format: Liquid

Preservative: Sodium azide

Precaution of Use: This product contains Sodium azide: a POISONOUS AND HAZARDOUS SUBSTANCE which should be handled by trained staff only.

Handling Advice: Avoid repeated freeze/thaw cycles and keep on ice when not in storage.

Storage: -20 °C

Storage Comment: Antibodies in solution can be stored at -20 °C for 2 years.

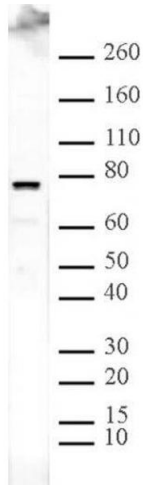
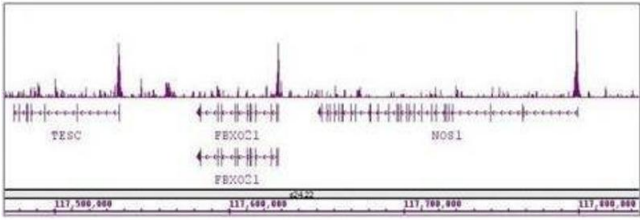
Expiry Date: 6 months

Publications

Product cited in: Jia, Li, Cong, Yang, Sun, Parvizi, Zhao: "Maternal low-protein diet affects epigenetic regulation of hepatic mitochondrial DNA transcription in a sex-specific manner in newborn piglets associated with GR binding to its promoter." in: **PLoS ONE**, Vol. 8, Issue 5, pp. e63855, (2013) ([PubMed](#)).

Li, ONeill: "5'-Methylcytosine and 5'-hydroxymethylcytosine each provide epigenetic information to the mouse zygote." in: **PLoS ONE**, Vol. 8, Issue 5, pp. e63689, (2013) ([PubMed](#)).

Li, Zou, Jia, Zhao: "Glucocorticoid receptor is involved in the breed-dependent transcriptional regulation of mtDNA- and nuclear-encoded mitochondria genes in the liver of newborn piglets." in: **BMC veterinary research**, Vol. 9, pp. 87, (2013) ([PubMed](#)).



ChIP DNA-Sequencing

Image 1. ASH2L antibody (pAb) tested by ChIP-Seq. ChIP was performed using the ChIP-IT® High Sensitivity Kit (Cat. No. 53040) with 30 ug of chromatin from undifferentiated hESC cells and 10 µl of antibody. ChIP DNA was sequenced on the Illumina HiSeq and 20 million sequence tags were mapped to identify ASH2L binding sites. The image shows binding across a region of chromosome 12. You can view the complete data set in the UCSC Genome Browser, starting at this specific location, here.

Western Blotting

Image 2. ASH2L pAb tested by Western blot. ASH2L detection by Western blot. The analysis of ASH2L was performed using HeLa nuclear extract and ASH2L pAb at a 1:2,000 dilution.