

Datasheet for ABIN2668917  
**anti-WHSC1 antibody (AA 1-647)**[Go to Product page](#)[2 Images](#)[2 Publications](#)

## Overview

Quantity:	100 µg
Target:	WHSC1
Binding Specificity:	AA 1-647
Reactivity:	Human
Host:	Mouse
Clonality:	Monoclonal
Application:	Western Blotting (WB), Immunofluorescence (IF), ChIP DNA-Sequencing (ChIP-seq), Chromatin Immunoprecipitation (ChIP), Immunocytochemistry (ICC)

## Product Details

Immunogen:	This MMSET / WHSC1 antibody was raised against a recombinant protein corresponding to amino acids 1-647 of human MMSET-l.
Clone:	29D1
Isotype:	IgG2b
Purification:	Protein G Chromatography

## Target Details

Target:	WHSC1
Alternative Name:	MMSET / WHSC1 ( <a href="#">WHSC1 Products</a> )
Molecular Weight:	88 & 157 kDa

## Target Details

Gene ID:	7468
Pathways:	<a href="#">SARS-CoV-2 Protein Interactome</a>

## Application Details

Application Notes:	Optimal working dilution should be determined by the investigator.
Restrictions:	For Research Use only

## Handling

Concentration:	1 µg/µL
Preservative:	Sodium azide
Precaution of Use:	This product contains Sodium azide: a POISONOUS AND HAZARDOUS SUBSTANCE which should be handled by trained staff only.
Handling Advice:	Avoid repeated freeze/thaw cycles and keep on ice when not in storage.
Storage:	-20 °C
Storage Comment:	Antibodies in solution can be stored at -20 °C for 2 years.
Expiry Date:	6 months

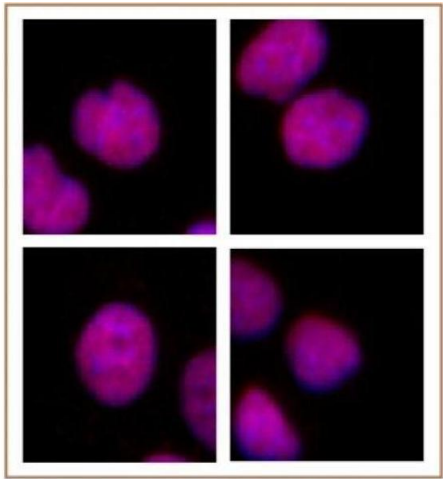
## Publications

Product cited in:	<p>Teo, Ingale, Wolfert, Elsayed, Nöt, Chatham, Wells, Boons: "Glycopeptide-specific monoclonal antibodies suggest new roles for O-GlcNAc." in: <b>Nature chemical biology</b>, Vol. 6, Issue 5, pp. 338-43, (2010) (<a href="#">PubMed</a>).</p> <p>Comer, Vosseller, Wells, Accavitti, Hart: "Characterization of a mouse monoclonal antibody specific for O-linked N-acetylglucosamine." in: <b>Analytical biochemistry</b>, Vol. 293, Issue 2, pp. 169-77, (2001) (<a href="#">PubMed</a>).</p>
-------------------	---



### ChIP DNA-Sequencing

**Image 1.** MMSET / WHSC1 antibody (mAb) tested by ChIP-Seq. ChIP was performed using the ChIP-IT® High Sensitivity Kit (Cat. No. 53040) with chromatin from a human multiple myeloma cell line (4.5 million cells) and 10 µl of antibody. ChIP DNA was sequenced on the Illumina HiSeq and 23 million sequence tags were mapped to identify MMSET binding patterns. The panel on the left shows binding across 12 million bp on chromosome 12. The panel on the right is zoomed in to show individual peaks.



### Immunofluorescence

**Image 2.** MMSET / WHSC1 antibody (mAb) tested by immunofluorescence. Formaldehyde fixed HeLa cells stained with MMSET / WHSC1 antibody at a 0.5 µg/ml dilution.