

Datasheet for ABIN2668935
anti-STAT1 antibody (pSer727)[Go to Product page](#)

2 Images

Overview

Quantity:	200 µL
Target:	STAT1
Binding Specificity:	pSer727
Reactivity:	Human
Host:	Rabbit
Clonality:	Polyclonal
Conjugate:	This STAT1 antibody is un-conjugated
Application:	Western Blotting (WB), Dot Blot (DB), Cleavage Under Targets and Tagmentation (CUT&Tag)

Product Details

Immunogen:	This STAT1 pSer727 antibody was raised against a synthetic peptide containing pserine 727 of human STAT1.
Purification:	None

Target Details

Target:	STAT1
Alternative Name:	STAT1 (STAT1 Products)
Molecular Weight:	92 kDa
Gene ID:	6772
Pathways:	JAK-STAT Signaling , RTK Signaling , Interferon-gamma Pathway , Response to Growth Hormone

Target Details

Stimulus, Cellular Response to Molecule of Bacterial Origin, Positive Regulation of Endopeptidase Activity, Hepatitis C, CXCR4-mediated Signaling Events

Application Details

Application Notes:	Optimal working dilution should be determined by the investigator.
Restrictions:	For Research Use only

Handling

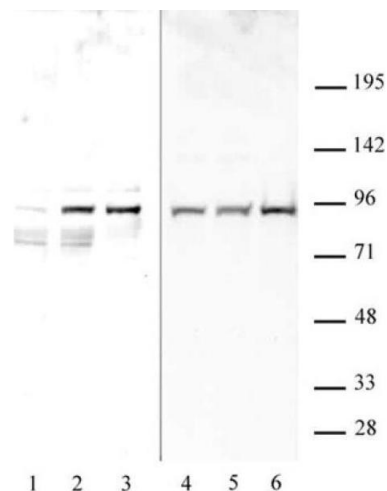
Format:	Liquid
Preservative:	Sodium azide
Precaution of Use:	This product contains Sodium azide: a POISONOUS AND HAZARDOUS SUBSTANCE which should be handled by trained staff only.
Handling Advice:	Avoid repeated freeze/thaw cycles and keep on ice when not in storage.
Storage:	-20 °C
Storage Comment:	Antibodies in solution can be stored at -20 °C for 2 years.
Expiry Date:	6 months

Images



Dot Blot

Image 1. STAT1 phospho Ser727 pAb tested by Dot blot. Dot blot analysis was used to confirm the specificity of 39633 for STAT1 phospho Ser727. Phosphorylated peptides corresponding to the immunogen and related peptides were spotted onto PVDF and probed with 39633 at 1:500. The amount of peptide (picomoles) spotted is indicated next to each row. Lane 1: unmodified Ser727 STAT1 peptide. Lane 2: phospho Ser727 STAT1 peptide. Lane 3: unmodified Tyr689 STAT2 peptide. Lane 4: phospho Tyr689 STAT2 peptide. Lane 5: unmodified Ser727 STAT3 peptide. Lane 6: phospho Ser727 STAT3 peptide. Lane 7: unmodified Tyr705 STAT3 peptide. Lane 8: phospho Tyr705 STAT3 peptide.



Lane 9: unmodified Ser726 STAT5A/Ser731 STAT5B peptide. Lane 10: phospho Ser726 STAT5A/Ser731 STAT5B peptide. Lane 11: unmodified Tyr694 STAT5A/Tyr699 STAT5B peptide. Lane 12: phospho Tyr694 STAT5A/Tyr699 STAT5B

Western Blotting

Image 2. STAT1 phospho Ser727 pAb tested by Western blot. Lanes 1&4: Untreated HeLa whole-cell extract (20 µg). Lane 2&5: Whole-cell extract (20 µg) of HeLa cells treated with IFNα (2500U/ml for 30 min.). Lanes 3&6: Whole-cell extract (20 µg) of COS-7 cells treated with IFNγ (1000U/ml for 15 min.). Lanes 1-3 were probed with Cat. No. 39633 at 1:500. Lanes 4-6 probed with Cat. No. 39059 (STAT1 alpha pAb) at 1:1000.