

Datasheet for ABIN2669167

Accutase® Cell Detachment Solution**2** Images[Go to Product page](#)

Overview

Quantity:	100 mL
Application:	Biochemical Assay (BCA)

Product Details

Characteristics:	Accutase® is a cell detachment solution containing proteolytic and collagenolytic enzymes, which are neither mammalian nor bacterial derived. It is a replacement for Trypsin-EDTA solution and is useful for the detachment of cells from standard tissue culture plasticware and adhesion coated plasticware, and polymers. Accutase® works exceptionally well for detaching cell lines for continued cell culturing, analysis of cell surface markers, virus growth assays, quiescence assays by serum starvation, transformation assays by oncogene transfection, neural crest cell migration assays, cell proliferation, cell haptotaxis, and tumor cell migration assays. Cell lines tested for Accutase™ application include fibroblasts, keratinocytes, vascular endothelial cells, hepatocytes, vascular smooth muscle cells, hepatocyte progenitors, primary chick embryo neuronal cells, bone marrow stem cells, adherent CHO and HNK cells, macrophages, 293 cells, L929 cells, immortalized mouse testicular germ cells, MIC5, 3T3, Vero, COS, HeLa, NT2, MG63, M24 and A375 metastatic melanoma, gliomas U251, D54, HT1080 fibrosarcoma cells, HT29 colon cancer cells, Sf9 insect cells, human embryonic stem cells, human mesenchymal stem cells, and human neural stem cells.
------------------	--

Components:	Accutase Cell Detachment Solution
-------------	-----------------------------------

Application Details

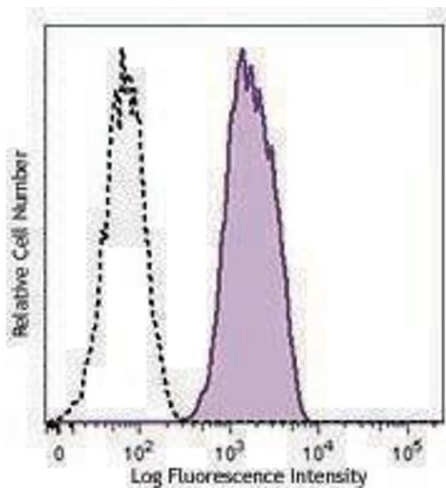
Application Notes:	Optimal working dilution should be determined by the investigator.
--------------------	--

Restrictions:	For Research Use only
---------------	-----------------------

Handling

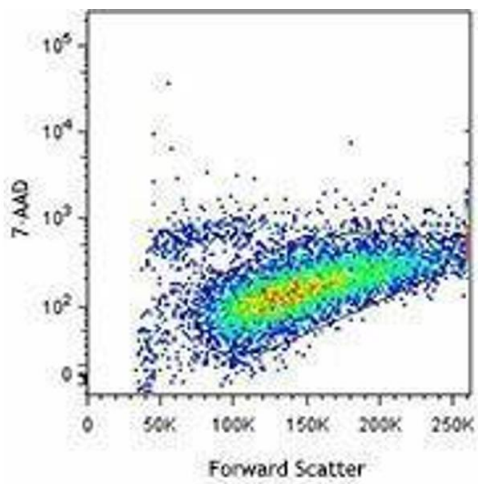
Format:	Liquid
Buffer:	Accutase® enzymes in Dulbecco's PBS containing 0.5 mM EDTA and phenol red.
Storage:	-20 °C
Storage Comment:	Upon receipt, store at -20°C. It can also be stored between 2°C and 8°C for up to 2 months.
Expiry Date:	2 months

Images



Flow Cytometry

Image 1.



Flow Cytometry

Image 2.