

Datasheet for ABIN2669170
Bromodeoxyuridine (BrdU)



[Go to Product page](#)

2 Images

Overview

Quantity:	25 mg
Application:	Multiplex Assay (MA)

Product Details

Characteristics: Bromodeoxyuridine, also known as BrdU (MW=307.1 Da), is a synthetic analog of thymidine that is incorporated into DNA during S-phase of the cell cycle. BrdU is rapidly assimilated by proliferating cells and can be detected with anti-BrdU specific antibodies by different techniques like flow cytometry, immunofluorescence, and immunohistochemistry. BrdU is widely used to measure DNA synthesis, study the cell cycle, and identify proliferating cells. In addition, it has been used as an antiviral and antineoplastic drug.

Components: Bromodeoxyuridine (BrdU)

Application Details

Application Notes: Optimal working dilution should be determined by the investigator.

Restrictions: For Research Use only

Handling

Concentration: 10 mg/mL

Buffer: This product consists of 5 vials. Each vial contains 5 mg/500 µL of BrdU in an aqueous solution.

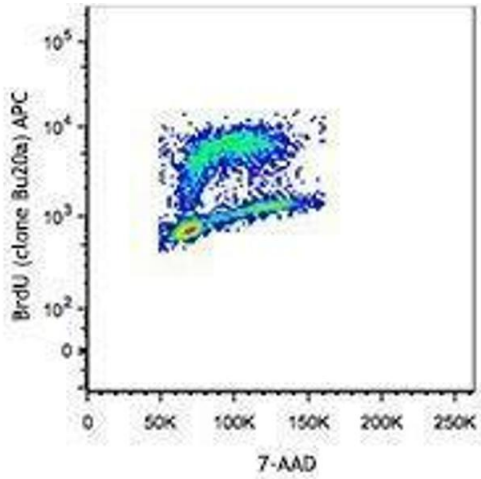
Handling Advice: Avoid repeated freeze/thaw cycles. Protect from light. Handle in aseptic conditions.

Storage: -80 °C

Handling

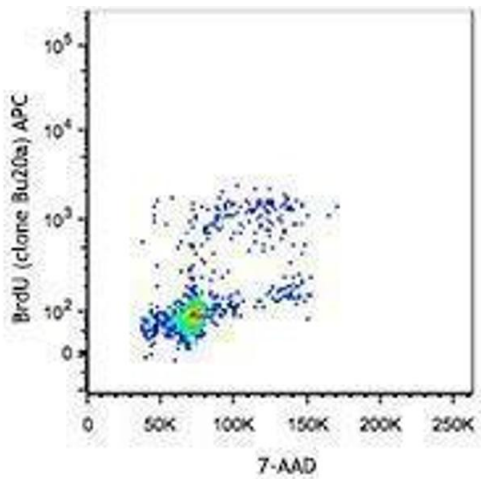
Storage Comment: Store at -70°C upon receipt. Once thawed, the solution is stable between 2°C and 8°C for 4 weeks.

Images



Flow Cytometry

Image 1.



Flow Cytometry

Image 2.