

Datasheet for ABIN2669194

Human Naive/Memory T cell ID Panel, Mouse IgG1/Mouse IgG1/Mouse IgG2b/Mouse IgG2a[Go to Product page](#)**2** Images

Overview

Quantity:	50 tests
Reactivity:	Human
Host:	Mouse
Clonality:	Monoclonal
Application:	Flow Cytometry (FACS)

Product Details

Characteristics: CD4+ T cells can be subdivided into naive, memory, and effector subsets based on their expression of CD45RA and CCR7. Naive T cells express high levels of CD45RA and CCR7, whereas memory T cells express variable levels of these markers. Expression of CCR7 and CD45RA allows differentiation of memory T cells into central (CCR7+CD45RA-) and effector memory (CCR7-CD45RA-) subsets. This panel of antibodies is designed for characterizing these three CD4+ T cell subsets, which may exhibit variations following antigenic stimulation such as viral infection or vaccination.

Components: Human Naive/Memory T cell ID Panel, Mouse IgG1/Mouse IgG1/Mouse IgG2b/Mouse IgG2a

Application Details

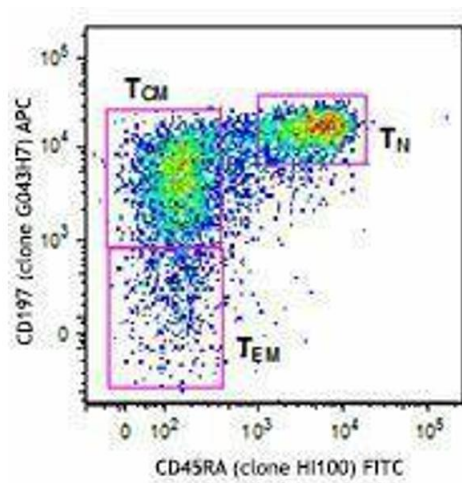
Application Notes: This reagent contains one vial each of APC/Cy7 conjugated anti-CD3 (clone SK7), PerCP/Cy5.5 conjugated anti-CD4 (clone SK3), FITC conjugated anti-CD45RA (clone HI100), and APC conjugated anti-CD197 (clone G043H7) at optimal concentration for four-color flow cytometric analysis.

Restrictions: For Research Use only

Handling

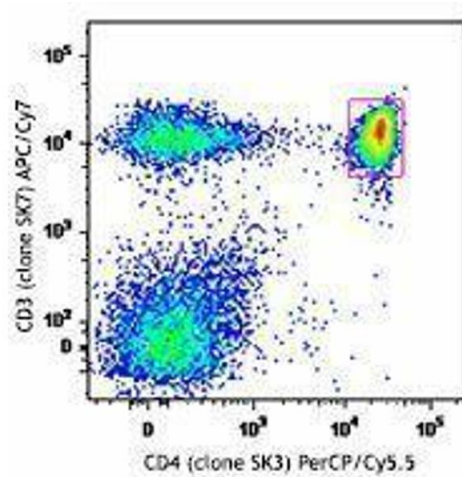
Buffer:	Phosphate-buffered solution, pH 7.2, containing 0.09 % sodium azide and 0.2 % (w/v) BSA .
Preservative:	Sodium azide
Precaution of Use:	This product contains Sodium azide: a POISONOUS AND HAZARDOUS SUBSTANCE which should be handled by trained staff only.
Handling Advice:	Protect from prolonged exposure to light. Do not freeze.
Storage:	4 °C
Storage Comment:	The antibody solution should be stored undiluted between 2°C and 8°C.

Images



Flow Cytometry

Image 1.



Flow Cytometry

Image 2.