

Datasheet for ABIN2669200

Mouse Naive/Memory T cell ID Panel**2** Images[Go to Product page](#)

Overview

| | |
|--------------|-----------------------|
| Quantity: | 50 tests |
| Reactivity: | Mouse |
| Host: | Rat |
| Clonality: | Monoclonal |
| Application: | Flow Cytometry (FACS) |

Product Details

| | |
|------------------|---|
| Characteristics: | In mice, CD4+ T cells can be divided into naive and memory cells based on expression of adhesion molecules CD44 and CD62L. Naive T cells exhibit high levels of CD62L and low expression of CD44, whereas memory T cells are identified by high CD44 and low CD62L expression. This panel includes antibodies against CD3, CD4, CD62L and CD44, which can be used together to identify naive and memory T cell subsets in mice. Alterations in these subsets are evident in older mice following antigenic stimulation. |
| Components: | Mouse Naive/Memory T cell ID Panel, Rat IgG2b/Rat IgG2a/Rat IgG2a/Rat IgG2b |

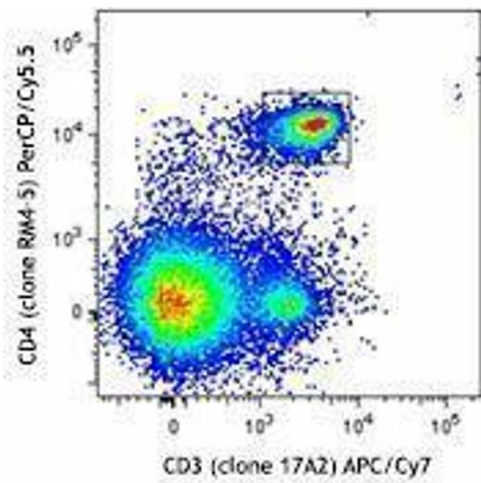
Application Details

| | |
|--------------------|---|
| Application Notes: | This reagent contains one vial each of APC/Cy7 conjugated anti-CD3 (clone 17A2), PerCP/Cy5.5 conjugated anti-CD4 (clone RM4-5), APC conjugated anti-CD62L (clone MEL-14), and PE conjugated anti-CD44 (clone IM7) at optimal concentration for four-color flow cytometric analysis. |
| Restrictions: | For Research Use only |

Handling

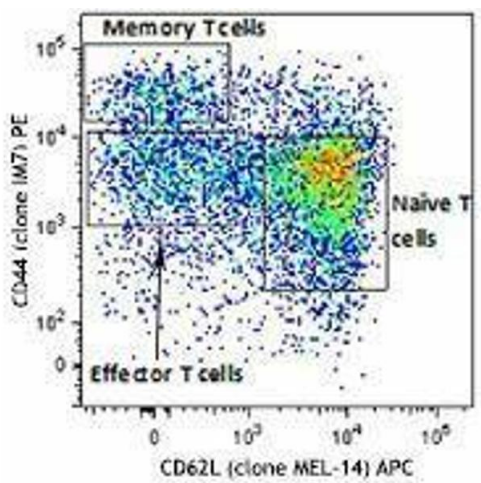
| | |
|--------------------|--|
| Buffer: | Phosphate-buffered solution, pH 7.2, containing 0.09 % sodium azide and 0.2 % (w/v) BSA . |
| Preservative: | Sodium azide |
| Precaution of Use: | This product contains Sodium azide: a POISONOUS AND HAZARDOUS SUBSTANCE which should be handled by trained staff only. |
| Handling Advice: | Protect from prolonged exposure to light. Do not freeze. |
| Storage: | 4 °C |
| Storage Comment: | The antibody solution should be stored undiluted between 2°C and 8°C. |

Images



Flow Cytometry

Image 1.



Flow Cytometry

Image 2.