



[Go to Product page](#)

Datasheet for ABIN2669213

FITC Annexin V Apoptosis Detection Kit with PI

2 Images

Overview

Quantity:	100 tests
Target:	Annexin V (ANXA5)
Reactivity:	Mammalian
Conjugate:	FITC
Application:	Multiplex Assay (MA)

Product Details

Characteristics: FITC Annexin V Apoptosis Detection Kit with PI has been specifically designed for the identification of apoptotic and necrotic cells. Annexin V (or Annexin A5) is a member of the annexin family of intracellular proteins that binds to phosphatidylserine (PS) in a calcium-dependent manner. PS is normally only found on the intracellular leaflet of the plasma membrane in healthy cells, but during early apoptosis, membrane asymmetry is lost and PS translocates to the external leaflet. Fluorochrome-labeled Annexin V can then be used to specifically target and identify apoptotic cells. Annexin V Binding Buffer is recommended for use with Annexin V staining. Annexin V binding alone cannot differentiate between apoptotic and necrotic cells. To help distinguish between the necrotic and apoptotic cells we recommend use of our Propidium Iodide Solution (PI). Early apoptotic cells will exclude PI, while late stage apoptotic cells and necrotic cells will stain positively, due to the passage of these dyes into the nucleus where they bind to DNA. Propidium iodide is a fluorescent dye that binds to DNA. When excited by 488 nm laser light, it can be detected with in the PE/Texas Red® channel with a bandpass filter 610/10. It is commonly used in evaluation of cell viability or DNA content in cell cycle analysis by flow cytometry.

Components: FITC Annexin V Apoptosis Detection Kit with PI

Target Details

Target: Annexin V (ANXA5)

Alternative Name: Annexin V ([ANXA5 Products](#))

Application Details

Application Notes: Optimal working dilution should be determined by the investigator.

Restrictions: For Research Use only

Handling

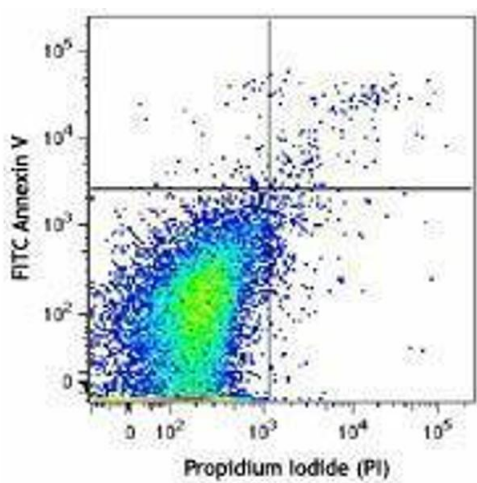
Precaution of Use: Caution: Propidium Iodide Solution is toxic and mutagenic, handle with care.

Handling Advice: Do not freeze.

Storage: 4 °C

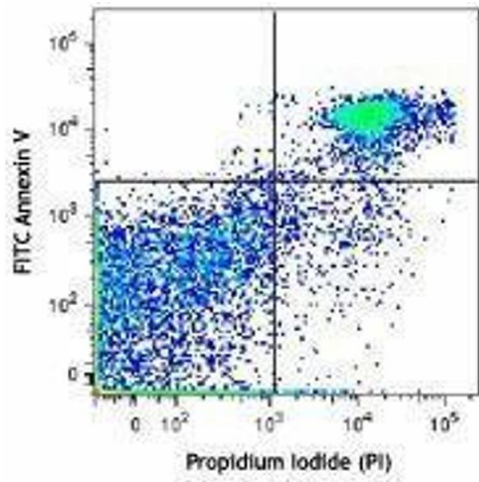
Storage Comment: Store between 2°C and 8°C.

Images



Flow Cytometry

Image 1.



Flow Cytometry

Image 2.