

Datasheet for ABIN2669222  
**Mouse MDSC Flow Cocktail 1**

## 2 Images

[Go to Product page](#)

## Overview

Quantity:	25 tests
Reactivity:	Mouse
Clonality:	Monoclonal
Application:	Flow Cytometry (FACS), Isotype Control (IsoC)

## Product Details

Characteristics:	<p>This mouse MDSC Flow Cocktail 1 is composed of CD11b, Gr-1, and Ly-6G antibodies and corresponding isotype controls. MDSCs have been reported with CD11b and Gr-1 phenotype. MDSCs are a heterogenous population of cells that can affect T cell function. Two different subsets of MDSC exist: CD11b+Ly-6G+Ly-6Clow (granulocytic MDSC) and CD11b+ Ly-6G-Ly-6Chi (monocytic MDSC). These cells have been identified in a variety of pathological conditions including cancer and autoimmune disease. CD11b: CD11b is a 170 kD glycoprotein also known as <math>\alpha</math>M integrin, Mac-1 <math>\alpha</math> subunit, Mol, CR3, and Ly-40. CD11b is a member of the integrin family, primarily expressed on granulocytes, monocytes/macrophages, dendritic cells, NK cells, and subsets of T and B cells. CD11b non-covalently associates with CD18 (<math>\beta</math>2 integrin) to form Mac-1. Mac-1 plays an important role in cell-cell interaction by binding its ligands ICAM-1 (CD54), ICAM-2 (CD102), ICAM-4 (CD242), iC3b, and fibrinogen. Gr-1: Gr-1 is a 21-25 kD protein also known as Ly-6G/Ly-6C. This myeloid differentiation antigen is a glycosylphosphatidylinositol (GPI)-linked protein expressed on granulocytes and macrophages. In bone marrow, the expression levels of Gr-1 directly correlate with granulocyte differentiation and maturation, Gr-1 is also transiently expressed on bone marrow cells in the monocyte lineage. Immature Myeloid Gr-1+ cells play a role in the development of antitumor immunity. Ly-6G: Lymphocyte antigen 6 complex, locus G (Ly-6G), a 21-25 kD GPI-anchored protein, is expressed on the majority of myeloid cells in bone marrow and peripheral granulocytes.</p>
------------------	---

## Product Details

Components:	Mouse MDSC Flow Cocktail 1 with Isotype Ctrl, Rat IgG2a/Rat IgG2b/Rat IgG2b, Clone: M1/70/RB6-8C5/1A8 25 tests
-------------	--

## Application Details

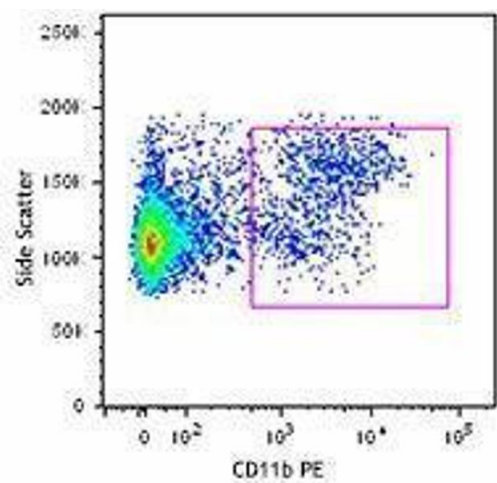
Application Notes:	Optimal working dilution should be determined by the investigator.,This reagent is a multicolor cocktail of PE conjugated CD11b (clone M1/70), APC conjugated Gr-1 (clone RB6-8C5), and FITC conjugated Ly-6G (clone 1A8) at optimal concentration for three-color flow cytometric analysis.
--------------------	--

Restrictions:	For Research Use only
---------------	-----------------------

## Handling

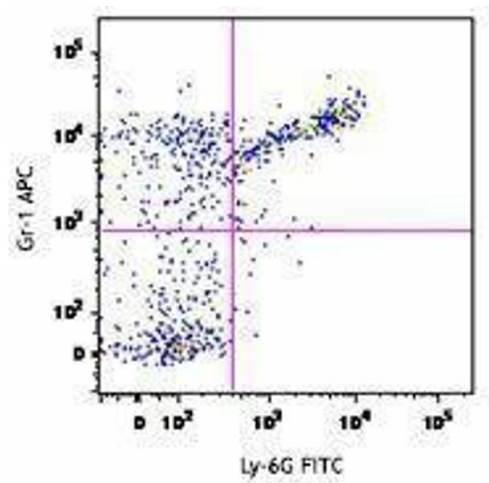
Buffer:	Phosphate-buffered solution, pH 7.2, containing 0.09 % sodium azide and 0.2 % (w/v) BSA .
Preservative:	Sodium azide
Precaution of Use:	This product contains Sodium azide: a POISONOUS AND HAZARDOUS SUBSTANCE which should be handled by trained staff only.
Handling Advice:	Protect from prolonged exposure to light. Do not freeze.
Storage:	4 °C
Storage Comment:	The antibody solution should be stored undiluted between 2°C and 8°C.

## Images



### Flow Cytometry

Image 1.



Flow Cytometry

Image 2.