

Datasheet for ABIN2669224
Human Th17 Flow Kit

3 Images

[Go to Product page](#)

Overview

Quantity:	25 tests
Target:	IL-17,CD3,CD4
Reactivity:	Human
Host:	Mouse
Clonality:	Monoclonal
Application:	Flow Cytometry (FACS)

Product Details

Brand:	Treg Flow™
Characteristics:	<p>Th17 cells are a subset of CD4+ T cells defined by their ability to produce the cytokines IL-17, IL-17F and IL-22. Th17 cells participate in normal epithelial immunity, their dysregulation is implicated in psoriasis, multiple sclerosis, systemic lupus erythmatosis, rheumatoid arthritis, and inflammatory bowel disease. BioLegend's human Th17 flow kit is designed and formulated specifically for one-step intracellular immunofluorescence staining and flow cytometric analysis of Th17 cells in a mixed cell population. This kit is composed of fluorochrome conjugated anti-human CD3, CD4 and IL-17 antibodies, isotype control and the critical buffers. It is easy to use for identification of Th17 cells.</p>
Components:	<p>Human Th17 Flow(TM) Kit (IL-17 Alexa Fluor 647/CD3 FITC/CD4 PE), Mouse IgG1, kappa (all clones), Clone: BL168/UCHT1/RPA-T4, HU1</p> <p>. Mouse IgG1,k isotype control Alexa Fluor® 647/CD3 FITC/CD4 PE,25 tests 2. Anti-human IL-17 Alexa Fuor® 647/CD3 FITC/CD4 PE, 25 tests 3. Fixation Buffer, 100m 4. Permeabilization Wash Buffer (10X), 100 ml</p>

Product Details

Material not included: Cell Staining Buffer

Target Details

Target: IL-17,CD3,CD4

Application Details

Application Notes: Optimal working dilution should be determined by the investigator.

Restrictions: For Research Use only

Handling

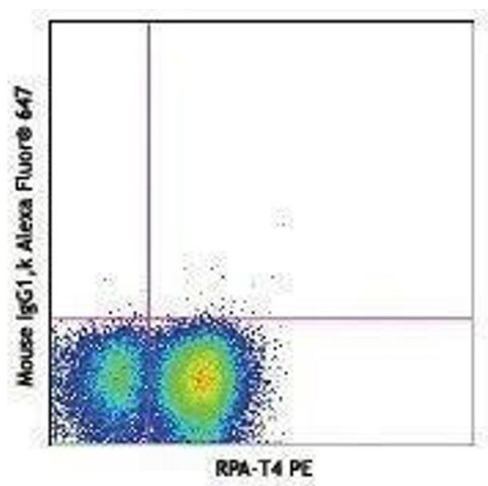
Handling Advice: Protect from prolonged exposure to light. Do not freeze.

Storage: 4 °C

Storage Comment: This kit is guaranteed for nine months. Upon receipt, store between 2°C and 8°C.

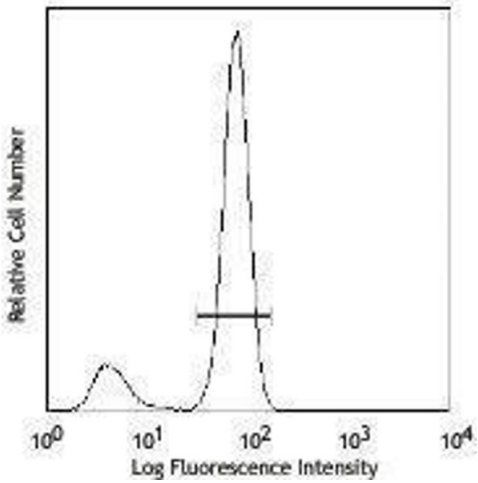
Expiry Date: 12 months

Images



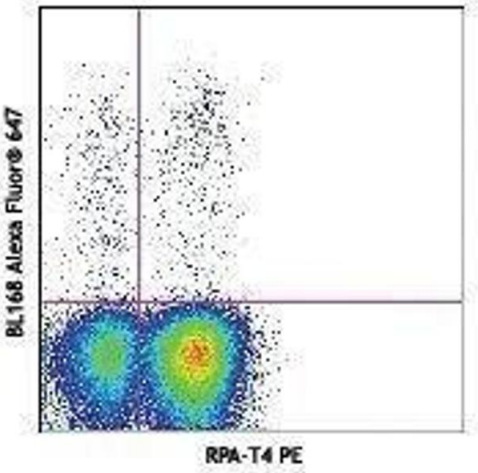
Flow Cytometry

Image 1.



ELISA

Image 2.



Flow Cytometry

Image 3.