

Datasheet for ABIN2669231

**FITC anti-human Lineage Cocktail (CD3/14/19/20/56)**[Go to Product page](#)**2** Images

## Overview

Quantity:	50 tests
Reactivity:	Human
Host:	Mouse
Clonality:	Monoclonal
Conjugate:	FITC
Application:	Flow Cytometry (FACS)

## Product Details

Characteristics:	This anti-Human Lineage Cocktail is optimized for the detection of human lymphocytes, monocytes, eosinophils, and neutrophils. In combination with other markers, it can be used for studies of dendritic cells (DCs), including DCs that express CD16. This cocktail is composed of CD3, CD14, CD19, CD20, and CD56. CD3 is the antigen mainly found on T cells, CD14 is expressed on monocytes/macrophages and at low levels on neutrophils and eosinophils, CD19 and CD20 are on B cells, CD56 is located on NK cells.
Purification:	The antibody was purified by affinity chromatography, and conjugated with FITC under optimal conditions. The solution is free of unconjugated FITC.
Components:	FITC anti-human Lineage Cocktail (CD3/14/19/20/56)

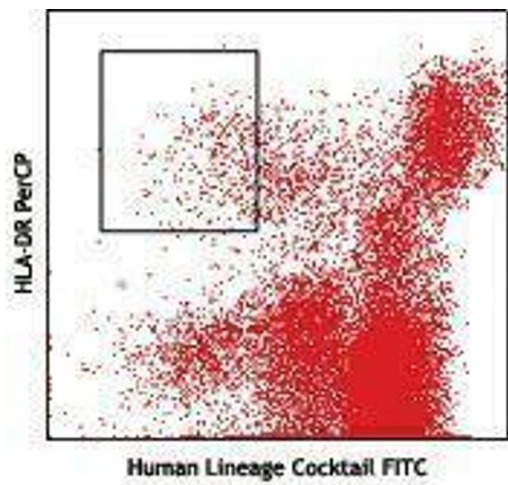
## Application Details

Application Notes:	Optimal working dilution should be determined by the investigator.
Restrictions:	For Research Use only

Handling

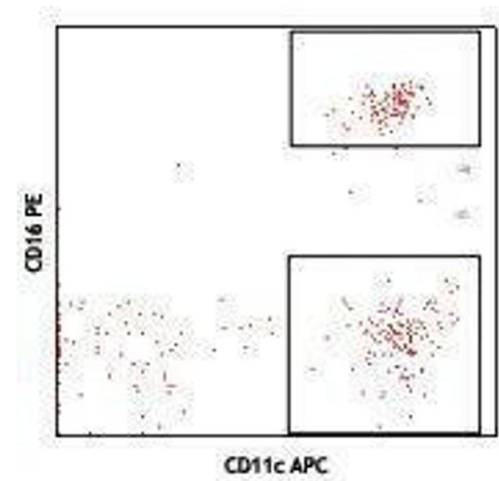
Buffer:	Phosphate-buffered solution, pH 7.2, containing 0.09 % sodium azide and 0.2 % (w/v) BSA .
Preservative:	Sodium azide
Precaution of Use:	This product contains Sodium azide: a POISONOUS AND HAZARDOUS SUBSTANCE which should be handled by trained staff only.
Handling Advice:	Protect from prolonged exposure to light. Do not freeze.
Storage:	4 °C
Storage Comment:	The antibody solution should be stored undiluted between 2°C and 8°C.

Images



Flow Cytometry

Image 1.



Flow Cytometry

Image 2.