



[Go to Product page](#)

Datasheet for ABIN2669236

Pacific Blue anti-mouse Lineage Cocktail

2 Images

Overview

Quantity:	100 tests
Reactivity:	Mouse
Host:	Rat
Clonality:	Monoclonal
Conjugate:	Pacific Blue
Application:	Flow Cytometry (FACS)

Product Details

Characteristics:	The mouse lineage panel has been designed to react with cells from the major hematopoietic cell lineages, such as T lymphocytes, B lymphocytes, monocytes/macrophages, granulocytes, NK cells, and erythrocytes. The Pacific Blue™ Mouse Lineage Antibody Cocktail is designed for the flow cytometric identification of hematopoietic progenitors in mouse bone marrow.
Purification:	The antibodies are purified by affinity chromatography, and conjugated with Pacific Blue™ under optimal conditions. The solution is free of unconjugated Pacific Blue™.
Components:	Pacific Blue anti-mouse Lineage Cocktail: anti-mouse CD3, clone 17A2, anti-mouse Ly-6G/Ly-6C, clone RB6-8C5, anti-mouse CD11b, clone M1/70, anti-mouse CD45R/B220, clone RA3-6B2, anti-mouse TER-119/Erythroid cells, clone Ter-119.
Material not included:	Isotype Controls, Cell Staining Buffer

Application Details

Application Notes:	Optimal working dilution should be determined by the investigator.
--------------------	--

Application Details

Restrictions: For Research Use only

Handling

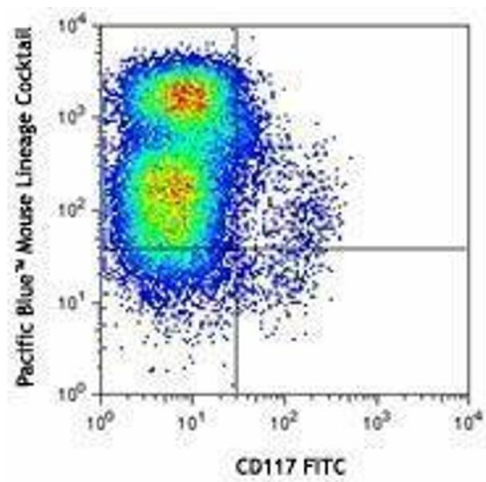
Buffer: This set contains Pacific Blue™ conjugated antibodies in an optimal concentration for flow cytometric analysis.

Handling Advice: Protect from prolonged exposure to light. Do not freeze.

Storage: 4 °C

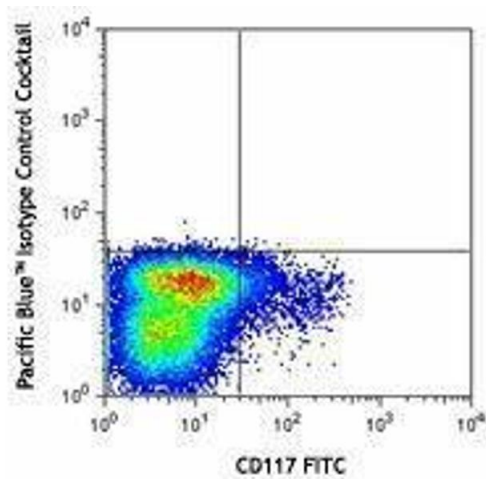
Storage Comment: The antibody solution should be stored undiluted between 2°C and 8°C.

Images



Flow Cytometry

Image 1.



Flow Cytometry

Image 2.