



Datasheet for ABIN2669264

Annexin V Protein

2 Images



[Go to Product page](#)

Overview

Quantity:	100 µg
Target:	Annexin V (ANXA5)
Origin:	Mammalian
Source:	Escherichia coli (E. coli)
Application:	Biochemical Assay (BCA)

Product Details

Characteristics: Annexin V (or Annexin A5) is a member of the annexin family of intracellular proteins that binds to phosphatidylserine (PS) in a calcium-dependent manner. PS is normally only found on the intracellular leaflet of the plasma membrane in healthy cells, but during early apoptosis, membrane asymmetry is lost and PS translocates to the external leaflet. Fluorochrome-labeled Annexin V can then be used to specifically target and identify apoptotic cells. Annexin V Binding Buffer (Cat. No. 422201) is recommended for use with Annexin V staining. Annexin V binding alone cannot differentiate between apoptotic and necrotic cells. Therefore, we recommend using our 7-AAD Viability Staining Solution (Cat. No. 420403/420404) or Propidium Iodide Solution (Cat. No. 421301). Early apoptotic cells will exclude 7-AAD and PI, while late stage apoptotic cells and necrotic cells will stain positively, due to the passage of these dyes into the nucleus where they bind to DNA.

Purification: The protein was purified by affinity chromatography.

Components: Purified Annexin V, PURE

Target Details

Target: Annexin V (ANXA5)

Alternative Name: Annexin V ([ANXA5 Products](#))

Pathways: [Apoptosis](#)

Application Details

Application Notes: Optimal working dilution should be determined by the investigator.

Restrictions: For Research Use only

Handling

Concentration: 0.5 mg/mL

Buffer: Phosphate-buffered solution, pH 7.2, containing 0.09 % sodium azide and 0.2 % (w/v) BSA .

Preservative: Sodium azide

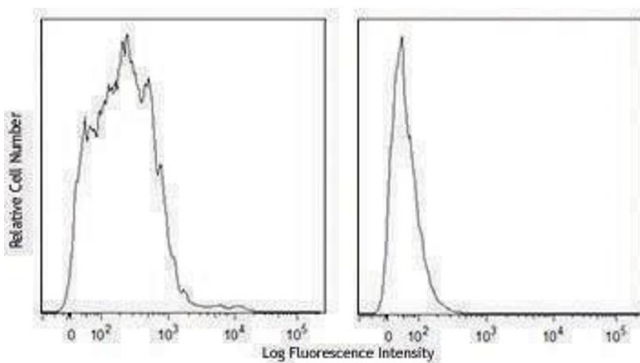
Precaution of Use: This product contains Sodium azide: a POISONOUS AND HAZARDOUS SUBSTANCE which should be handled by trained staff only.

Handling Advice: Protect from prolonged exposure to light. Do not freeze.

Storage: 4 °C

Storage Comment: The Annexin V solution should be stored undiluted between 2°C and 8°C.

Images



Flow Cytometry

Image 1.

Flow Cytometry

Image 2.

