

Datasheet for ABIN2669625

## SETD2 Protein (AA 1418-1714, Lys36) (GST tag)



[Go to Product page](#)

### 2 Images

#### Overview

Quantity:	50 µg
Target:	SETD2
Protein Characteristics:	Lys36, AA 1418-1714
Origin:	Human
Source:	Escherichia coli (E. coli)
Protein Type:	Recombinant
Biological Activity:	Active
Purification tag / Conjugate:	This SETD2 protein is labelled with GST tag.
Application:	Enzyme Activity Assay (EAA)

#### Product Details

**Characteristics:** Set2 is a histone methyltransferase that methylates histone H3 at lysine 36. Amino acids 1418-1714 of Set2 (accession number NM\_014159) were expressed in E. coli with an N-terminal GST tag (MW= 61 kDa).

#### Target Details

Target:	SETD2
Alternative Name:	Set2 ( <a href="#">SETD2 Products</a> )
Pathways:	<a href="#">Tube Formation</a>

## Application Details

Application Notes: Recombinant Set2 is suitable for use in histone methyltransferase (HMT) assays. A good starting point is 50 to 500 ng of enzyme per assay.

Restrictions: For Research Use only

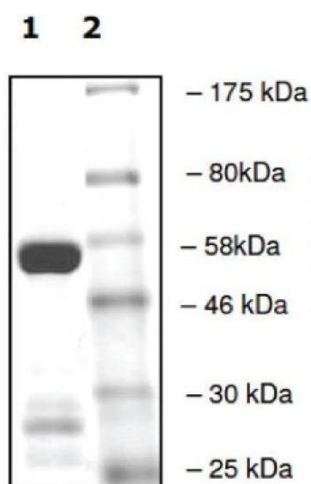
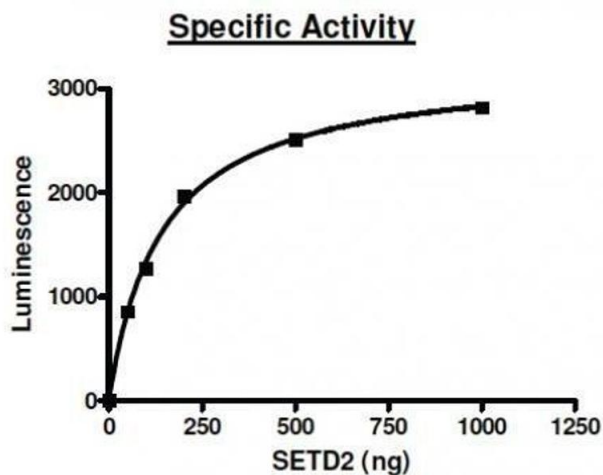
## Handling

Handling Advice: Avoid repeated freeze/thaw cycles and keep on ice when not in storage.

Storage: -80 °C

Storage Comment: Recombinant proteins in solution are temperature sensitive and must be stored at -80°C to prevent degradation.

## Images



### Activity Assay

**Image 1.** Set2 activity assay. Recombinant Set2 activity measured using a chemiluminescent methyltransferase assay.

### Western Blotting

**Image 2.**