

Datasheet for ABIN2669640

BRPF1 Protein (AA 627-746) (His tag,DYKDDDDK Tag)[Go to Product page](#)**2** Images

Overview

Quantity:	100 µg
Target:	BRPF1
Protein Characteristics:	AA 627-746
Origin:	Human
Source:	Escherichia coli (E. coli)
Protein Type:	Recombinant
Purification tag / Conjugate:	This BRPF1 protein is labelled with His tag,DYKDDDDK Tag.
Application:	Binding Studies (Bind), Screening Assay (ScA)

Product Details

Characteristics:	The peptide corresponding to amino acids 627 - 746 that contains the bromodomain sequences of BRPF1 (accession number NM_001003694.1) was expressed in E. coli and contains an N-terminal His tag and C-terminal FLAG tag with an observed molecular weight of 20.3 kDa.
------------------	--

Target Details

Target:	BRPF1
Alternative Name:	BRPF1 (BRPF1 Products)
Background:	Bromodomain and PHD finger containing (BRPF1) protein is a component of the MOZ/MORF complex which has histone H3 acetyltransferase activity. The bromodomain of BRPF1 recognizes acetylated histone lysine residues and function as a 'reader' of these epigenetic

Target Details

histone marks to regulate chromatin structure and gene expression by linking associated proteins to the recognized acetylated nucleosomal targets. BRPF1 is known to positively regulate the transcription of RUNX1 and RUNX2.

Molecular Weight: 20.3 kDa

Application Details

Application Notes: Recombinant BRPF1 (627-746) is suitable for use in binding assays, inhibitor screening, and selectivity profiling.

Restrictions: For Research Use only

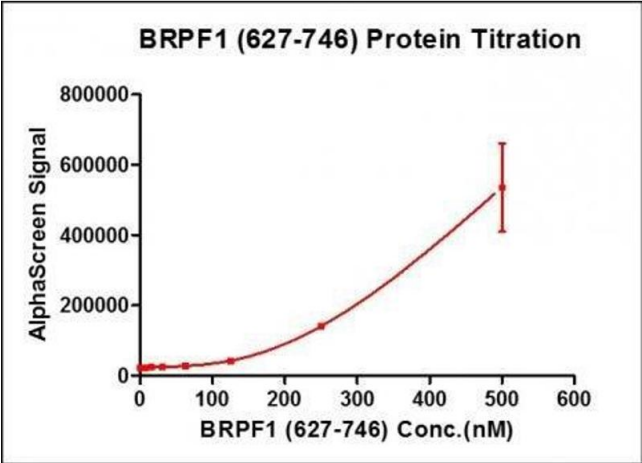
Handling

Handling Advice: Avoid repeated freeze/thaw cycles and keep on ice when not in storage.

Storage: -80 °C

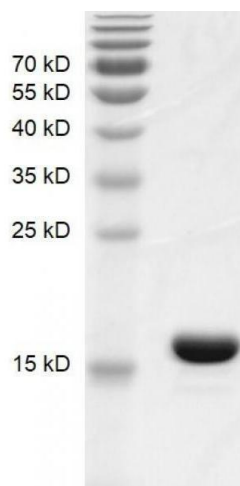
Storage Comment: Recombinant proteins in solution are temperature sensitive and must be stored at -80°C to prevent degradation.

Images



Activity Assay

Image 1. Recombinant BRPF1 (627-746) activity using AlphaScreen. BRPF1 (627-746) activity was assessed using an AlphaScreen® assay. Titration curves were generated to show signal response in the presence of modified peptide substrate at increasing protein concentrations. This data was generated and kindly provided courtesy of ChemPartner.



Western Blotting

Image 2. Recombinant BRPF1 (627-746) protein gel. BRPF1 (627-746) protein was run on an SDS-PAGE gel and stained with Coomassie blue.