

Datasheet for ABIN2669650

Polybromo 1 Protein (PBRM1) (AA 613-734) (His tag,DYKDDDDK Tag)[Go to Product page](#)**2** Images

Overview

Quantity:	100 µg
Target:	Polybromo 1 (PBRM1)
Protein Characteristics:	AA 613-734
Origin:	Human
Source:	Escherichia coli (E. coli)
Protein Type:	Recombinant
Purification tag / Conjugate:	This Polybromo 1 protein is labelled with His tag,DYKDDDDK Tag.

Product Details

Characteristics:	The peptide corresponding to amino acids 613 - 734 that contains the bromodomain sequences of PBRM1 (accession number NP_060635.2) was expressed in E. coli and contains an N-terminal His tag and C-terminal FLAG tag with an observed molecular weight of 20.513 kDa. It shows binding specificity for acetylated H3K14.
------------------	--

Target Details

Target:	Polybromo 1 (PBRM1)
Alternative Name:	PBRM1 (PBRM1 Products)
Background:	<p>Polybromo 1 (PBRM1) protein, also known as BRG1-associated factor 180 (BAF180) is the chromatin targeting subunit of the SWI/SNF-B (PBAF) chromatin remodeling complex that is involved in transcriptional activation and repression of select genes. PBRM1 targets chromatin via its six bromodomains that recognize and bind acetylated histone lysine residues.</p> <p>Bromodomains function as 'readers' of these epigenetic histone marks and regulate chromatin</p>

Target Details

structure and gene expression by linking associated proteins to the acetylated nucleosomal targets. PBRM1 also acts as an inhibitor of cell proliferation and demonstrates tumor suppressing properties in relation to breast, liver and lung cancers.

Molecular Weight: 20.513 kDa

Application Details

Restrictions: For Research Use only

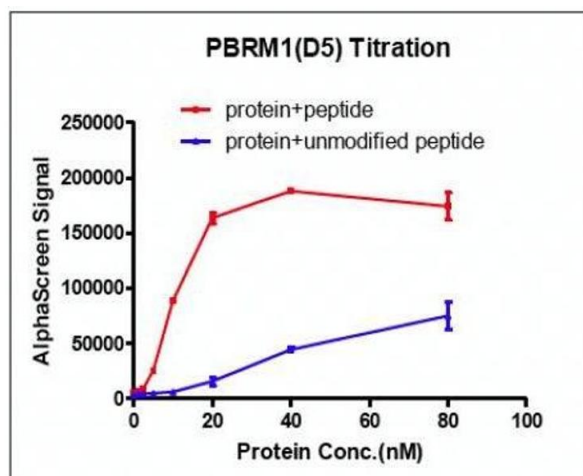
Handling

Handling Advice: Avoid repeated freeze/thaw cycles and keep on ice when not in storage.

Storage: -80 °C

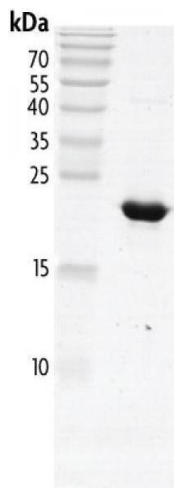
Storage Comment: Recombinant proteins in solution are temperature sensitive and must be stored at -80°C to prevent degradation.

Images



Screening Assay

Image 1. Recombinant PBRM1 (613-734) activity using AlphaScreen. PBRM1 (613-734) was used in an AlphaScreen® assay to generate a titration curve demonstrating the signal response in the presence of modified peptide substrate at increasing protein concentrations. This data was generated and kindly provided courtesy of ChemPartner.



Western Blotting

Image 2. Recombinant PBRM1 (613-734) protein gel. PBRM1 (613-734) protein was run on a 10% SDS-PAGE gel and stained with Coomassie blue.