

Datasheet for ABIN2669668
SMYD3 Protein (DYKDDDDK Tag)

2 Images

[Go to Product page](#)

Overview

Quantity:	20 µg
Target:	SMYD3
Origin:	Human
Source:	Baculovirus
Protein Type:	Recombinant
Purification tag / Conjugate:	This SMYD3 protein is labelled with DYKDDDDK Tag.
Application:	Enzyme Activity Assay (EAA), Screening Assay (ScA)

Product Details

Characteristics:	Recombinant Smyd3 (accession number NP_001161212.1) was expressed in Sf9 cells and contains an N-terminal FLAG tag with an observed molecular weight of 50.7 kDa.
------------------	---

Target Details

Target:	SMYD3
Alternative Name:	SMYD3 (SMYD3 Products)
Background:	SET and MYND domain-containing protein 3 (Smyd3) is a member of the Smyd family of histone methyltransferases that specifically methylates lysine 4 of histone H3 (H3K4), inducing di- and tri-methylation, but not monomethylation. Smyd3 plays an important role in transcriptional activation as a member of an RNA polymerase complex. It has also been shown to bind DNA containing 5'-CCCTCC-3' or 5'-GAGGGG-3' sequences. Smyd3 expression has been shown to be upregulated in certain cancers.

Target Details

Molecular Weight: 50.7 kDa

Application Details

Application Notes: Recombinant Smyd3 is suitable for use in the study of enzyme kinetics, inhibitor screening, and selectivity profiling. Specific Activity: Specifically mediates the methylation of 'Lys-4' and 'Lys-5' of histone H3 and may methylate non-histone substrates. HMT Assay Conditions: 50 mM TrisCl, pH 8.6, 0.02 % Triton X-100, 2 mM MgCl₂, 1 mM TCEP, 60 ng/μl non-histone peptide, 30 ng/μl Recombinant Smyd3 protein at 2 hours at room temperature. Activity was detected by fluorography.

Restrictions: For Research Use only

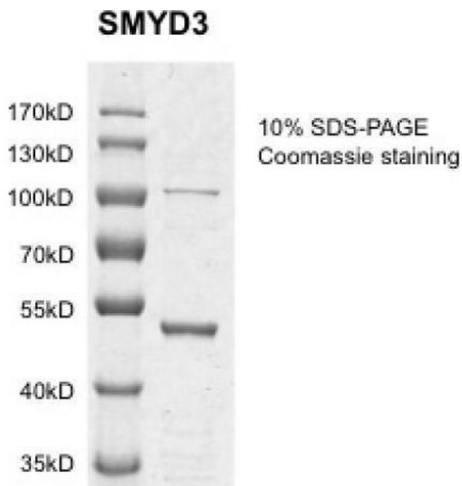
Handling

Handling Advice: Avoid repeated freeze/thaw cycles and keep on ice when not in storage.

Storage: -80 °C

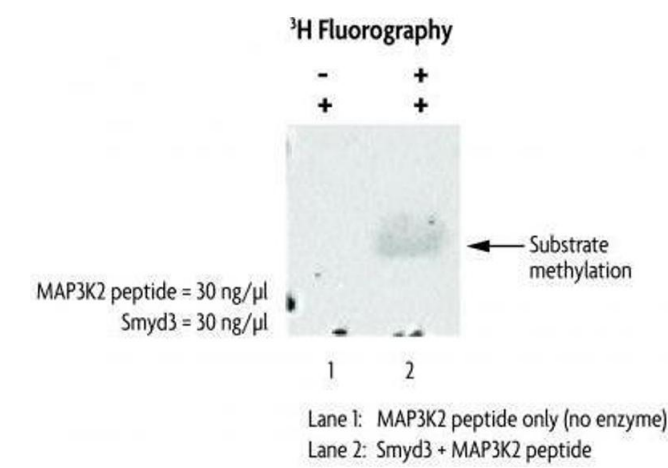
Storage Comment: Recombinant proteins in solution are temperature sensitive and must be stored at -80°C to prevent degradation.

Images



Western Blotting

Image 1. Recombinant SMYD3 protein gel. SMYD3 protein was run on an SDS-PAGE gel and stained with Coomassie blue.



Western Blotting

Image 2. SMYD3 activity assay. HMT assay measuring the activity of Recombinant SMYD3. Activity was detected by fluorography.