

Datasheet for ABIN2669678
LSD1 Protein (DYKDDDDK Tag)[Go to Product page](#)

2 Images

Overview

Quantity:	20 µg
Target:	LSD1 (KDM1A)
Origin:	Human
Source:	Baculovirus
Protein Type:	Recombinant
Purification tag / Conjugate:	This LSD1 protein is labelled with DYKDDDDK Tag.
Application:	Enzyme Activity Assay (EAA), Screening Assay (ScA)

Product Details

Characteristics:	Recombinant LSD1 / KDM1A (accession number NP_055828) was expressed in Sf9 cells and contains an N-terminal FLAG tag with a molecular weight of 97.1 kDa.
------------------	---

Target Details

Target:	LSD1 (KDM1A)
Alternative Name:	LSD1 / KDM1A (KDM1A Products)
Background:	<p>LSD1 (Lysine-specific demethylase 1, also designated KDM1A) was identified as a subunit of different complexes (such as CTBP, CoREST, NuRD or BRAF35). LSD1 is involved in transcriptional repression of genes through the demethylation of Histone H3 monomethyl Lys4 and Histone H3 dimethyl Lys4, a methylation site associated with transcriptional activation. LSD1 is also involved in transcriptional activation through the demethylation of Histone H3 monomethyl Lys9 and Histone H3 dimethyl Lys9, a modification often associated with transcriptional repression. LSD1 is also able to demethylate Lys370me1 and Lys370me2 in the</p>

Target Details

	regulatory domain of the tumor suppressor p53. LSD1 is a flavin-dependent amine oxidase.
Molecular Weight:	97.1 kDa
Pathways:	Regulation of Hormone Metabolic Process , Regulation of Hormone Biosynthetic Process , Negative Regulation of intrinsic apoptotic Signaling , Warburg Effect

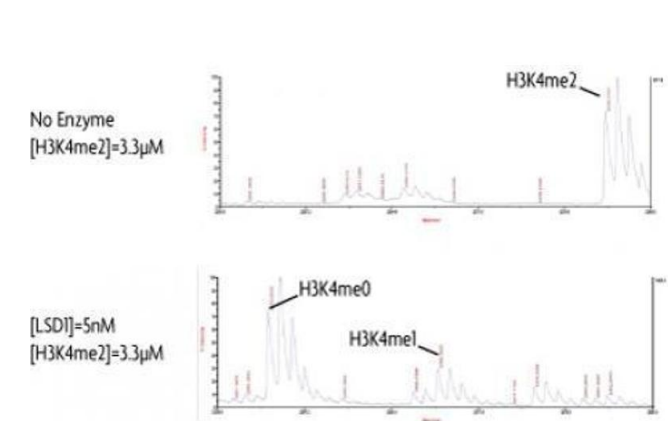
Application Details

Application Notes:	Recombinant LSD1 / KDM1A is suitable for use in the study of enzyme kinetics, inhibitor screening, and selectivity profiling. Specific Activity: H3K4me2 and H3K4me1 demethylase. Histone Demethylase Assay Conditions: 50 mM TrisCl pH 8.25, 0.02 % Triton X100, 10 nM FAD, 5 nM Recombinant LSD1 / KDM1A protein, and 3.3 μ M H3K4me2 (aa 1-21) peptide at 2 hours at room temperature. MALDI-TOF was used for detection.
Restrictions:	For Research Use only

Handling

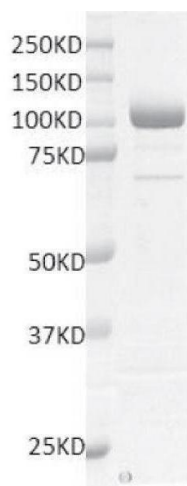
Handling Advice:	Avoid repeated freeze/thaw cycles and keep on ice when not in storage.
Storage:	-80 °C
Storage Comment:	Recombinant proteins in solution are temperature sensitive and must be stored at -80°C to prevent degradation.

Images



Activity Assay

Image 1. LSD1 / KDM1A activity assay. Recombinant LSD1 / KDM1A activity measured using a demethylation assay. MALDI-TOF was used for detection.



Western Blotting

Image 2. Recombinant LSD1 / KDM1A protein gel. LSD1 / KDM1A protein was run on a 10% SDS-PAGE gel and stained with Coomassie blue.