

Datasheet for ABIN2669686

BRD1 Protein (AA 556-688) (His tag,DYKDDDDK Tag)[Go to Product page](#)**2** Images

Overview

Quantity:	100 µg
Target:	BRD1
Protein Characteristics:	AA 556-688
Origin:	Human
Source:	Escherichia coli (E. coli)
Protein Type:	Recombinant
Purification tag / Conjugate:	This BRD1 protein is labelled with His tag,DYKDDDDK Tag.
Application:	Binding Studies (Bind), Screening Assay (ScA)

Product Details

Characteristics:	The peptide corresponding to amino acids 556-688 that contains the bromodomain sequences of BRD1 (accession number NP_055392.1) was expressed in E. coli and contains an N-terminal His tag and C-terminal FLAG tag with an observed molecular weight of 21.5 kDa.
------------------	--

Target Details

Target:	BRD1
Alternative Name:	BRD1 (BRD1 Products)
Background:	Bromodomain-containing protein 1 (BRD1) belongs to the BET subclass of proteins, which are characterized by two N-terminal bromodomains and one ET (Extra Terminal) domain. BRDs associate with chromatin through their bromodomains that recognize acetylated histone lysine residues. Bromodomains function as 'readers' of these epigenetic histone marks and regulate

Target Details

chromatin structure and gene expression by linking associated proteins to the acetylated nucleosomal targets. The ET domain functions as a protein binding motif and exerts atypical serine-kinase activity. The BET family consists of several members that function in the regulation of transcriptional activation and chromatin remodeling.

Molecular Weight: 21.5 kDa

Application Details

Application Notes: Recombinant BRD1 (556-688) is suitable for use in binding assays, inhibitor screening, and selectivity profiling.

Restrictions: For Research Use only

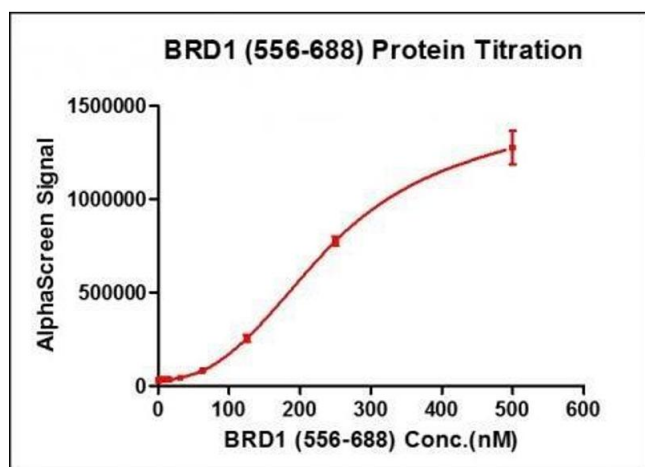
Handling

Handling Advice: Avoid repeated freeze/thaw cycles and keep on ice when not in storage.

Storage: -80 °C

Storage Comment: Recombinant proteins in solution are temperature sensitive and must be stored at -80°C to prevent degradation.

Images



Activity Assay

Image 1. Recombinant BRD1 (556-688) activity using AlphaScreen. BRD1 (556-688) titration was assessed using an AlphaScreen® assay. Titration curves were generated to show signal response in the presence of modified peptide substrate at increasing protein concentrations. This data was generated and kindly provided courtesy of ChemPartner.



Western Blotting

Image 2. Recombinant BRD1 (556-688) protein gel. BRD1 (556-688) protein was run on an SDS-PAGE gel and stained with Coomassie blue.