

Datasheet for ABIN2669693

ASH1L Protein (AA 2407-2579) (His tag,DYKDDDDK Tag)[Go to Product page](#)**1** Image

Overview

Quantity:	100 µg
Target:	ASH1L
Protein Characteristics:	AA 2407-2579
Origin:	Human
Source:	Escherichia coli (E. coli)
Protein Type:	Recombinant
Purification tag / Conjugate:	This ASH1L protein is labelled with His tag,DYKDDDDK Tag.
Application:	Binding Studies (Bind), Screening Assay (ScA)

Product Details

Characteristics:	The peptide corresponding to amino acids 2407-2579 that contains the bromodomain sequences of ASH1L (accession number NP_060959.2) was expressed in E. coli and contains an N-terminal His tag and C-terminal FLAG tag with an observed molecular weight of 25.6 kDa.
------------------	---

Target Details

Target:	ASH1L
Alternative Name:	ASH1L (ASH1L Products)
Background:	ASH1L is a member of the Trithorax group of transcriptional activators. The protein contains four AT hooks, a SET domain, a PHD-finger motif, and a bromodomain. The bromodomain functions as a 'reader' of epigenetic histone marks and regulates chromatin structure and gene expression by linking associated proteins to the recognized acetylated nucleosomal targets.

Target Details

ASH1L is localized to the nucleus and also to cell-cell tight junctions where it is hypothesized to function in adhesion-mediated signaling. ASH1L functions in methylation of H3K4 and regulation of expression of HOX genes and may possess methyltransferase activity directed at H3K36. ASH1L has also been implicated in facioscapulohumeral muscular dystrophy.

Molecular Weight: 25.6 kDa

Application Details

Application Notes: Recombinant ASH1L (2407-2579) is suitable for use in binding assays, inhibitor screening, and selectivity profiling.

Restrictions: For Research Use only

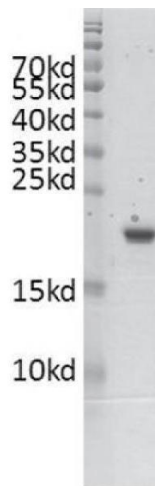
Handling

Handling Advice: Avoid repeated freeze/thaw cycles and keep on ice when not in storage.

Storage: -80 °C

Storage Comment: Recombinant proteins in solution are temperature sensitive and must be stored at -80°C to prevent degradation.

Images



Western Blotting

Image 1. Recombinant ASH1L (2407-2579) protein gel. ASH1L (2407-2579) protein was run on a 10% SDS-PAGE gel and stained with Coomassie blue.