

Datasheet for ABIN2669701

WHSC1 Protein (DYKDDDDK Tag)**2** Images[Go to Product page](#)

Overview

Quantity:	20 µg
Target:	WHSC1
Origin:	Human
Source:	Baculovirus
Protein Type:	Recombinant
Purification tag / Conjugate:	This WHSC1 protein is labelled with DYKDDDDK Tag.
Application:	Enzyme Activity Assay (EAA), Screening Assay (ScA)

Product Details

Characteristics:	Recombinant MMSET / WHSC1 (accession number NP_579877.1) was expressed in Sf9 cells and contains an N-terminal FLAG tag with an observed molecular weight of 154 kDa.
------------------	-----------------------------------------------------------------------------------------------------------------------------------------------------------------------

Target Details

Target:	WHSC1
Alternative Name:	MMSET / WHSC1 (WHSC1 Products)
Background:	MMSET (Multiple Myeloma SET domain-containing protein) / WHSC1 (Wolf-Hirschhorn Syndrome Candidate 1, also known as NSD2, Nuclear Receptor binding SET domain protein 2, TRX5, Trithorax 5) is a SET domain-containing histone methyltransferase specific for lysine 36 of histone H3. The MMSET / WHSC1 gene is deleted in Wolf-Hirschhorn syndrome, a disorder characterized by developmental defects and mental retardation. In 15 % of patients with Multiple Myeloma (MM), a chromosomal translocation leads to MMSET / WHSC1 gene being aberrantly placed under the control of the IgH intronic µ enhancer and expressed at very high

Target Details

levels. This event is apparently a key component in cellular transformation leading to MM. Reduction in MMSET / WHSC1 expression in a myeloma cell line suppressed its growth, suggesting a role for MMSET in maintaining the transformed state.

Molecular Weight: 154 kDa

Pathways: [SARS-CoV-2 Protein Interactome](#)

Application Details

Application Notes: Recombinant MMSET / WHSC1 is suitable for use in the study of enzyme kinetics, inhibitor screening, and selectivity profiling. Specific Activity: H3K36me2 methyltransferase activity. HMT Assay Conditions: 50 mM TrisCl, pH 8.6, 0.02 % Triton X-100, 2 mM MgCl₂, 1 mM TCEP, 100 µM SAM, 30 ng/µl Recombinant Nucleosomes, 30 ng/µl Recombinant MMSET / WHSC1 protein at 2 hours at room temperature. Activity was detected by fluorography.

Restrictions: For Research Use only

Handling

Handling Advice: Avoid repeated freeze/thaw cycles and keep on ice when not in storage.

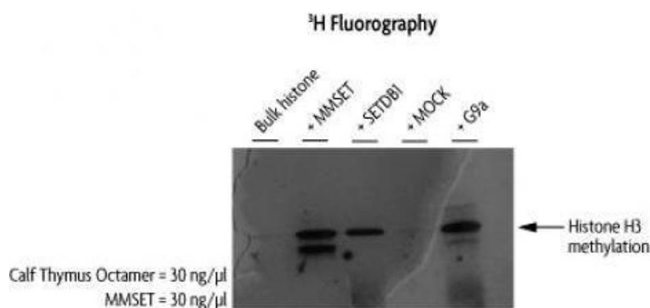
Storage: -80 °C

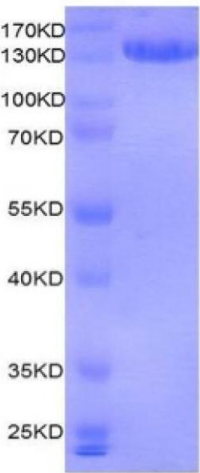
Storage Comment: Recombinant proteins in solution are temperature sensitive and must be stored at -80°C to prevent degradation.

Images

Western Blotting

Image 1. MMSET / WHSC1 activity assay. HMT assay measuring the activity of Recombinant MMSET / WHSC1. Activity was detected by fluorography.





SDS-PAGE

Image 2. Recombinant MMSET / WHSC1 protein gel. MMSET / WHSC1 protein was run on a 10% SDS-PAGE gel and stained with Coomassie blue.