

Datasheet for ABIN2669706
KDM4C Protein (DYKDDDDK Tag)[Go to Product page](#)

2 Images

Overview

Quantity:	20 µg
Target:	KDM4C
Origin:	Human
Source:	Baculovirus
Protein Type:	Recombinant
Purification tag / Conjugate:	This KDM4C protein is labelled with DYKDDDDK Tag.
Application:	Enzyme Activity Assay (EAA), Screening Assay (ScA)

Product Details

Characteristics:	Recombinant JMJD2C / KDM4C (accession number NP_055876.2) was expressed in Sf9 cells and contains an N-terminal FLAG tag with a calculated molecular weight of 124.1 kDa.
------------------	---

Target Details

Target:	KDM4C
Alternative Name:	JMJD2C / KDM4C (KDM4C Products)
Background:	<p>KDM4C (lysine (K)-specific demethylase 4C), also known as JMJD2C (Jumonji Domain Containing 2C) is a nuclear protein that functions as a trimethylation-specific histone demethylase that preferentially demethylates trimethylated lysine 9 (K9me3) and lysine 36 (K36me3) residues of histone H3, converting these trimethylated histone residues to dimethylated form. KDM4C has no activity for mono- and dimethylated H3K9 and H3K36. Chromosomal aberrations and overexpression of KDM4C are associated with esophageal squamous cell carcinoma. KDM4C regulates colonosphere formation in colorectal cancers by</p>

Target Details

	mediating the crosstalk between Wnt and Notch signaling pathways.
Molecular Weight:	124.1 kDa
Pathways:	Nuclear Hormone Receptor Binding , Warburg Effect

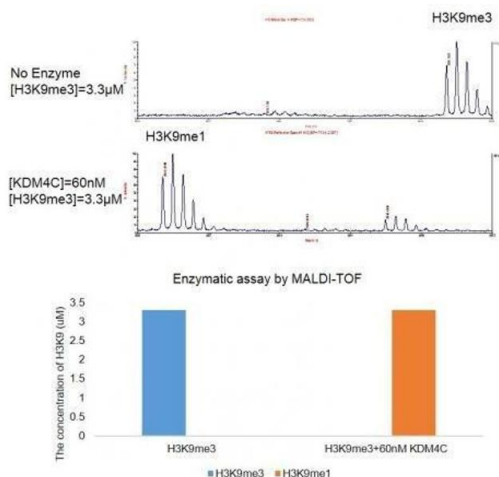
Application Details

Application Notes:	Recombinant JMJD2C / KDM4C is suitable for use in the study of enzyme kinetics, inhibitor screening, and selectivity profiling. Specific Activity: H3K9me3 and H3K36me3 demethylase. Catalytic Activity: >100 turnovers/ enzyme molecule Histone Demethylase Assay Conditions: 50 mM HEPES pH 7.5, 0.02 % Triton X100, 100 μM 2OG, 100 μM Ascorbate, 50 μM (NH4)2Fe(SO4)2•6H2O, 1 mM TCEP, 60 nM Recombinant JMJD2C / KDM4C protein, and 3.3 μM H3K9me3 (aa 1-21) peptide at 2 hours at room temperature. MALDI-TOF was used for detection.
Restrictions:	For Research Use only

Handling

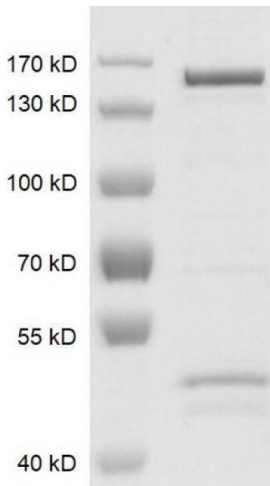
Handling Advice:	Avoid repeated freeze/thaw cycles and keep on ice when not in storage.
Storage:	-80 °C
Storage Comment:	Recombinant proteins in solution are temperature sensitive and must be stored at -80°C to prevent degradation.

Images



Activity Assay

Image 1. JMJD2C / KDM4C activity assay. Recombinant JMJD2C / KDM4C activity measured using a demethylation assay. MALDI-TOF was used for detection. Catalytic ability: >100 turnovers/ enzyme molecule.



Western Blotting

Image 2. Recombinant JMJD2C / KDM4C protein gel. JMJD2C / KDM4C protein was run on an SDS-PAGE gel and stained with Coomassie blue.