

Datasheet for ABIN2669708
KDM6A Protein (DYKDDDDK Tag)

3 Images

[Go to Product page](#)

Overview

Quantity:	20 µg
Target:	KDM6A
Origin:	Human
Source:	Baculovirus
Protein Type:	Recombinant
Purification tag / Conjugate:	This KDM6A protein is labelled with DYKDDDDK Tag.
Application:	Enzyme Activity Assay (EAA), Screening Assay (ScA)

Product Details

Characteristics:	Recombinant UTX / KDM6A (accession number NP_066963.2) was expressed in Sf9 cells and contains an N-terminal FLAG tag with an observed molecular weight of 158.8 kDa.
------------------	---

Target Details

Target:	KDM6A
Alternative Name:	UTX / KDM6A (KDM6A Products)
Background:	KDM6A (lysine (K)-specific demethylase 6A), also known as UTX (Ubiquitously Transcribed Tetratricopeptide Repeat, X Chromosome) is a protein that functions as a histone demethylase that preferentially demethylates di- and trimethylated lysine 27 residues of histone H3, while it has no activity on monomethylated H3K27 residues. KDM6A plays a central role in posterior development by regulating HOX gene expression. Demethylation of lysine 27 is concomitant with methylation of lysine 4 of histone H3 and regulates the recruitment of the PRC1 complex and monoubiquitination of histone H2A.

Target Details

Molecular Weight:	158.8 kDa
Pathways:	Tube Formation , Warburg Effect

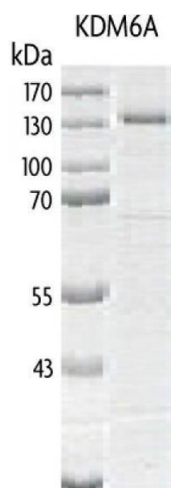
Application Details

Application Notes:	Recombinant UTX / KDM6A is suitable for use in the study of enzyme kinetics, inhibitor screening, and selectivity profiling. Specific Activity: H3K27me3 demethylase. Histone Demethylase Assay Conditions: 50 mM HEPES pH 7.5, 0.02 % Triton X100, 100 μ M 2OG, 100 μ M Ascorbate, 50 μ M (NH ₄) ₂ Fe(SO ₄) ₂ •6H ₂ O, 1 mM TCEP, 100 nM Recombinant UTX / KDM6A protein, and 3.3 μ M H3K27me3 peptide at 2 hours at room temperature. MALDI-TOF was used for detection.
Restrictions:	For Research Use only

Handling

Handling Advice:	Avoid repeated freeze/thaw cycles and keep on ice when not in storage.
Storage:	-80 °C
Storage Comment:	Recombinant proteins in solution are temperature sensitive and must be stored at -80°C to prevent degradation.

Images



Western Blotting

Image 1. Recombinant UTX / KDM6A protein gel. UTX / KDM6A protein was run on an SDS-PAGE gel and stained with Coomassie blue.

Activity Assay

Image 2. UTX / KDM6A activity assay. Recombinant UTX / KDM6A activity measured using a demethylation assay. MALDI-TOF was used for detection.

Screening Assay

Image 3.

