

Datasheet for ABIN2669723

KDM1B Protein (full length) (GST tag)**2** Images[Go to Product page](#)

Overview

Quantity:	20 µg
Target:	KDM1B
Protein Characteristics:	full length
Origin:	Human
Source:	Baculovirus
Protein Type:	Recombinant
Purification tag / Conjugate:	This KDM1B protein is labelled with GST tag.
Application:	Enzyme Activity Assay (EAA), Screening Assay (ScA)

Product Details

Characteristics:	Full-length Recombinant KDM1B / LSD2 (accession number XM_005248926.1) was expressed in Sf9 cells and contains an N-terminal GST tag with an observed molecular weight of 116 kDa.
------------------	--

Target Details

Target:	KDM1B
Alternative Name:	KDM1B / LSD2 (KDM1B Products)
Background:	KDM1B / LSD2 (Lysine (K)-Specific Demethylase 1B / Lysine-Specific Histone Demethylase 2) is a histone demethylase that demethylates 'Lys-4' of histone H3, a specific tag for epigenetic transcriptional activation, thereby acting as a corepressor. Required for de novo DNA methylation of a subset of imprinted genes during oogenesis. Demethylates both mono- and di-

Target Details

methylated 'Lys-4' of histone H3. Has no effect on tri-methylated 'Lys-4', mono-, di- or tri-methylated 'Lys-9', mono-, di- or tri-methylated 'Lys-27', mono-, di- or tri-methylated 'Lys-36' of histone H3, or on mono-, di- or tri-methylated 'Lys-20' of histone H4 (by similarity).

Molecular Weight: 116 kDa

Pathways: [Warburg Effect](#)

Application Details

Application Notes: Recombinant KDM1B / LSD2 protein is suitable for use in the study of enzyme kinetics, inhibitor screening, and selectivity profiling. Specific Activity: H3K4me2 and H3K4me1 demethylase. DMT Assay Conditions: 50 mM TrisCl, pH 8.0, 0.02 % Triton X-100, 10 nM FAD, 5 nM KDM1B / LSD2, 3.3 μM H3K4me2 peptide at 2 hours at room temperature. MALDI-TOF was used for detection.

Restrictions: For Research Use only

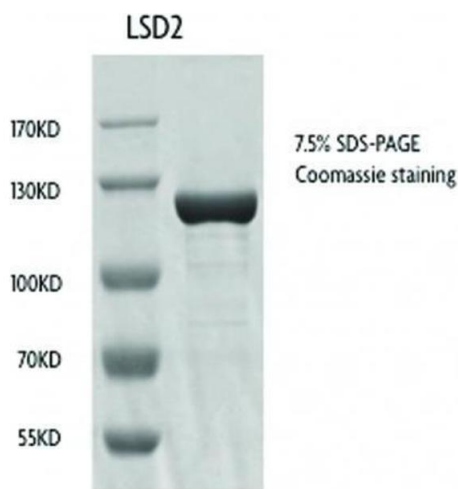
Handling

Handling Advice: Avoid repeated freeze/thaw cycles and keep on ice when not in storage.

Storage: -80 °C

Storage Comment: Recombinant proteins in solution are temperature sensitive and must be stored at -80°C to prevent degradation.

Images



Western Blotting

Image 1. Recombinant KDM1B / LSD2 protein gel. Recombinant KDM1B / LSD2 run on an SDS-PAGE gel and stained with Coomassie blue.

Activity Assay

Image 2. KDM1B / LSD2 activity assay. Recombinant KDM1B / LSD2 activity measured using a demethylation assay. MALDI-TOF was used for detection.

