

Datasheet for ABIN2669853

Goat anti-Rabbit IgG (Fc Region) Antibody - Preadsorbed**2** Images[Go to Product page](#)

Overview

Quantity:	2 mg
Target:	IgG
Binding Specificity:	Fc Region
Reactivity:	Rabbit
Host:	Goat
Clonality:	Polyclonal
Application:	ELISA, Immunohistochemistry (IHC), Western Blotting (WB), Lateral Flow (LF)

Product Details

Immunogen:	Immunogen: Anti-Rabbit IgG was produced by repeated immunization with rabbit IgG f(c) fragment in goat Immunogen Type: Native Protein
Isotype:	IgG
Specificity:	IgG F(ab') ₂
Cross-Reactivity:	Rabbit
Characteristics:	Anti-Rabbit antibody generated in goat detects specifically rabbit IgG F(s). This secondary antibody anti-Rabbit is ideal for investigators who routinely perform titration assays, western-blot, immunoprecipitation and more generally immunoassays. Concentration Definition: by UV absorbance at 280 nm
Purification:	Preadsorption: immunoaffinity chromatography using Rabbit IgG coupled to agarose
Sterility:	Sterile filtered

Target Details

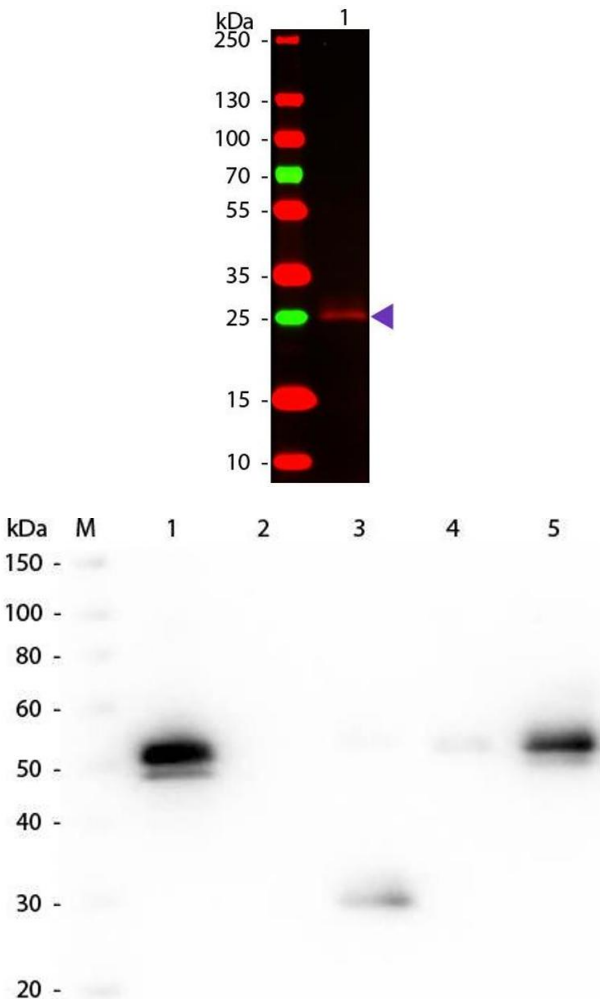
Target:	IgG
Abstract:	IgG Products
Target Type:	Antibody
Background:	<p>Synonyms: goat anti-Rabbit IgG F(c) Antibody, Gt-a-Rabbit IgG F(c), Rabbit IgG F(c) Antibody in goat, Goat IgG F(c) Secondary Antibody.</p> <p>Background: Anti-Rabbit IgG F(c) generated in goat is a proteolytic fragment of immunoglobulin G (IgG) obtained by limited digestion with the enzyme papain under controlled conditions of temperature, time and pH . Receptors bind the Fc portion of rabbit IgG and often this fragment is removed from immunoglobulins to minimize receptor binding and lower background reactivity.</p>

Application Details

Application Notes:	<p>Immunohistochemistry Dilution: 1:1,000 - 1:5,000</p> <p>Application Note: Antibody Anti-Rabbit IgG F(c) is suitable for immunoblotting (western or dot blot), ELISA, and immunohistochemistry as well as other peroxidase-antibody based enzymatic assays requiring lot-to-lot consistency.</p> <p>ELISA Dilution: 1:20,000 - 1:100,000</p> <p>Western Blot Dilution: 1:2,000 - 1:10,000</p>
Restrictions:	For Research Use only

Handling

Format:	Liquid
Concentration:	1.99 mg/mL
Buffer:	<p>Buffer: 0.02 M Potassium Phosphate, 0.15 M Sodium Chloride, pH 7.2</p> <p>Stabilizer: None</p> <p>Preservative: 0.01 % (w/v) Sodium Azide</p>
Preservative:	Sodium azide
Precaution of Use:	This product contains Sodium azide: a POISONOUS AND HAZARDOUS SUBSTANCE which should be handled by trained staff only.
Storage:	4 °C,-20 °C
Expiry Date:	12 months



Western Blotting

Image 1. Western Blot of Goat Anti-Rabbit F(c) secondary antibody. Lane 1: Rabbit F(c). Lane 2: None. Load: 50 ng per lane. Primary antibody: Rabbit F(c) antibody at 1:1,000 overnight at 4°C. Secondary antibody: 649 goat secondary antibody at 1:20,000 for 30 min at RT. Blocking: ABIN925618 for 30 min at RT. Predicted/Observed size: 25 kDa, 25 kDa for Rabbit F(c). Other band(s): None.

Western Blotting

Image 2. Western Blot of Anti-Rabbit IgG F(c) (GOAT) Antibody . Lane M: 3 µl Molecular Ladder. Lane 1: Rabbit IgG whole molecule . Lane 2: Rabbit IgG F(ab) Fragment . Lane 3: Rabbit IgG F(c) Fragment . Lane 4: Rabbit IgM Whole Molecule . Lane 5: Normal Rabbit Serum . All samples were reduced. Load: 50 ng of IgG, F(ab), IgM and Serum, 100 ng of F(c). Block: ABIN925618 for 30 min at RT. Primary Antibody: Anti-Rabbit IgG F(c) (GOAT) Antibody 1:2,000 for 60 min at RT. Secondary antibody: Anti-Goat IgG (DONKEY) Peroxidase Conjugated Antibody 1:40,000 in ABIN925618 for 30 min at RT. Predicted/Obsevered Size: 25 and 50 kDa for Rabbit IgG and Serum, 25 kDa for F(c) and F(ab), 70 and 23 kDa for IgM. Rabbit F(c) migrates slightly higher.