



Datasheet for ABIN2669881

Goat anti-Human IgG (Fc Region) Antibody (PE) - Preadsorbed



[Go to Product page](#)

1 Image

1 Publication

Overview

Quantity:	500 µg
Target:	IgG
Binding Specificity:	Fc Region
Reactivity:	Human
Host:	Goat
Clonality:	Polyclonal
Conjugate:	PE
Application:	Flow Cytometry (FACS), Fluorescence Microscopy (FM)

Product Details

Immunogen:	Immunogen: Anti-Human IgG was produced by repeated immunization with Human IgG F(c) fragment in goat. Immunogen Type: Native Protein
Isotype:	IgG
Fragment:	F(ab') ₂ fragment
Specificity:	Assay by immunoelectrophoresis resulted in a single precipitin arc against anti-Phycoerythrin, anti-Goat Serum, Human IgG, Human IgG F(c) and Human Serum.
Cross-Reactivity:	Human
Characteristics:	F(ab') ₂ HUMAN IgG F(c) Pre-adsorbed Phycoerythrin Conjugated Antibody was generated by enzymatic cleavage and subsequent separation from the Fc fragment. Because of their smaller size, F(ab) ₂ fragments offer several advantages over intact antibodies for use in certain

Product Details

immunochemical techniques and experimental applications. F(ab)₂ fragments penetrate into tissue samples and show better antigen recognition and signal generation in IHC. F(ab)₂ fragments lack the Fc region and therefore do not bind Fc receptors which effectively lowers background staining. F(ab')₂ HUMAN IgG F(c) Pre-adsorbed Phycoerythrin Conjugated Antibody is ideal for investigators who routinely perform flow cytometry, immunohistochemistry or IHC and other immunoassays.

Purification: Preadsorption: Solid phase absorption

Target Details

Target: IgG

Abstract: [IgG Products](#)

Target Type: Antibody

Background: Synonyms: Goat F(ab')₂ Anti-Human IgG F(c) Phycoerythrin Conjugated Pre-Adsorbed Antibody, Goat Fab₂ Anti-Human IgG Fc Fragment Phycoerythrin Conjugated Antibody, Goat F(ab')₂ Anti-Human IgG F(c) Fragment Antibody PE Conjugated

Background: F(ab')₂ Anti-Human IgG F(c) Phycoerythrin Antibody generated in goat detects Human F(c). Representing approximately 75 % of serum immunoglobulins in humans, IgG is the most abundant antibody isotype found in the circulation. IgG molecules are synthesized and secreted by plasma B cells. Secondary Antibodies are available in a variety of formats and conjugate types. When choosing a secondary antibody product, consideration must be given to species and immunoglobulin specificity, conjugate type, fragment and chain specificity, level of cross-reactivity, and host-species source and fragment composition. F(c) Antibody is ideal for investigators who routinely perform flow cytometry, immunohistochemistry or IHC and other immunoassays.

Application Details

Application Notes: Application Note: Suitable for immunomicroscopy and flow cytometry or FACS analysis as well as other antibody based fluorescent assays requiring extremely low background levels, absence of F(c) mediated binding, lot-to-lot consistency, high titer and specificity. The maximum amount of reagent required to stain 1 x 10⁶ cells in flow cytometry is approximately 1.0 µg of antibody conjugate. Lesser amounts of reagent may be sufficient for staining. Optimal titers for other applications should be determined by the researcher. As a general guideline dilutions of 1:100 to 1:250 should be suitable for most applications.

Application Details

Flow Cytometry Dilution: 1:100 - 1:250

IF Microscopy Dilution: 1:100 - 1:250

Restrictions: For Research Use only

Handling

Format: Lyophilized

Reconstitution: Reconstitution Volume: 1.0 mL
Reconstitution Buffer: Restore with deionized water (or equivalent)

Concentration: 0.5 mg/mL

Buffer: Buffer: 0.02 M Potassium Phosphate, 0.15 M Sodium Chloride, pH 7.2
Stabilizer: 10 mg/mL Bovine Serum Albumin (BSA) - Immunoglobulin and Protease free
Preservative: 0.01 % (w/v) Sodium Azide

Preservative: Sodium azide

Precaution of Use: This product contains Sodium azide: a POISONOUS AND HAZARDOUS SUBSTANCE which should be handled by trained staff only.

Handling Advice: Product is photosensitive and should be protected from light.

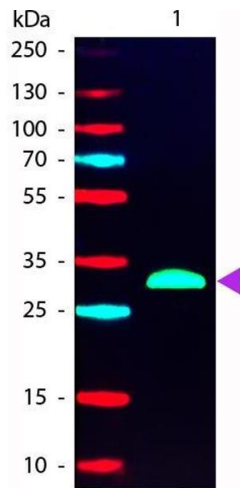
Storage: RT, 4 °C

Storage Comment: Store vial at 4 °C prior to restoration. For extended storage aliquot contents and freeze at -24 °C or below. This product is stable for several weeks at 4 °C as an undiluted liquid.

Expiry Date: 12 months

Publications

Product cited in: Bi, Niu, Ding, Zhang, Yang, Gu: "Angiopoietin-1 attenuates angiotensin II-induced ER stress in glomerular endothelial cells via a Tie2 receptor/ERK1/2-p38 MAPK-dependent mechanism." in: **Molecular and cellular endocrinology**, Vol. 428, pp. 118-32, (2016) ([PubMed](#)).



Western Blotting

Image 1. Western blot of Phycoerythrin conjugated Goat F(ab')₂ Anti-Human IgG F(c) Pre-Adsorbed secondary antibody. Lane 1: Human Fc. Lane 2: None. Load: 50 ng per lane. Primary antibody: None. Secondary antibody: Phycoerythrin goat secondary antibody at 1:1,000 for 60 min at RT. Blocking: ABIN925618 for 30 min at RT. Predicted/Observed size: 28 kDa, 28 kDa for Human IgG F(c). Other band(s): None.