

Datasheet for ABIN2669882

**Goat anti-Human IgG (F(ab')₂ Region) Antibody (PE) -
Preadsorbed**[Go to Product page](#)**1** Image

Overview

Quantity:	500 µg
Target:	IgG
Binding Specificity:	F(ab') ₂ Region
Reactivity:	Human
Host:	Goat
Clonality:	Polyclonal
Conjugate:	PE
Application:	Flow Cytometry (FACS), Fluorescence Microscopy (FM)

Product Details

Immunogen:	Immunogen: Anti-Human IgG (H&L) was produced by repeated immunization with human IgG F(ab') ₂ fragment in goat. Immunogen Type: Native Protein
Isotype:	IgG
Fragment:	F(ab') ₂ fragment
Specificity:	Assay by immunoelectrophoresis resulted in a single precipitin arc against anti-Phycoerythrin, anti-Goat Serum, Human IgG, Human IgG F(ab') ₂ and Human Serum.
Characteristics:	Anti-Human F(ab') ₂ IgG F(ab') ₂ phycoerythrin conjugated antibody generated in goat detects specifically human IgG F(ab') ₂ . This secondary phycoerythrin conjugated antibody anti-Human is ideal for investigators who routinely perform titration assays, and microscopy. Anti-Human F(ab') ₂ IgG F(ab') ₂ phycoerythrin conjugated antibody generated in goat detects

Product Details

specifically human IgG F(ab')₂. This secondary phycoerythrin conjugated antibody anti-Human is ideal for investigators who routinely perform titration assays, and microscopy.

Purification: Preadsorption: Solid phase absorption

Target Details

Target: IgG

Abstract: [IgG Products](#)

Target Type: Antibody

Background: Synonyms: Goat F(ab')₂ Anti-Human IgG F(ab')₂ Phycoerythrin Conjugated Antibody Pre-Adsorbed, Goat F(ab')₂ Anti-Human IgG F(ab')₂ Antibody PE Conjugation
Background: F(ab')₂ Anti-Human IgG F(ab')₂ Phycoerythrin Antibody generated in goat detects F(ab')₂ from human. Representing approximately 75 % of serum immunoglobulins in humans, IgG is the most abundant antibody isotype found in the circulation. IgG molecules are synthesized and secreted by plasma B cells. Secondary Antibodies are available in a variety of formats and conjugate types. When choosing a secondary antibody product, consideration must be given to species and immunoglobulin specificity, conjugate type, fragment and chain specificity, level of cross-reactivity, and host-species source and fragment composition. F(ab')₂ Antibody is ideal for investigators who routinely perform flow cytometry, immunohistochemistry or IHC and other immunoassays.

Application Details

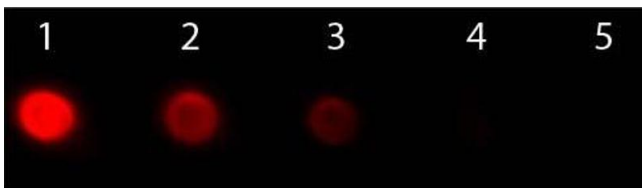
Application Notes: Application Note: F(ab')₂ Anti-Human IgG F(ab')₂ Phycoerythrin Antibody is ideal for investigators who routinely perform titration assays, and microscopy. Antibody anti-Human F(ab')₂ phycoerythrin conjugated is suitable for immunomicroscopy and flow cytometry or FACS analysis as well as other antibody based fluorescent assays requiring extremely low background levels, absence of F(c) mediated binding, lot-to-lot consistency, high titer and specificity. The maximum amount of reagent required to stain 1 x 10⁶ cells in flow cytometry is approximately 1.0 µg of antibody conjugate. Lesser amounts of reagent may be sufficient for staining. Optimal titers for other applications should be determined by the researcher. As a general guideline dilutions of 1:100 to 1:250 should be suitable for most applications.
Flow Cytometry Dilution: 1:100 - 1:250
IF Microscopy Dilution: 1:100 - 1:250

Restrictions: For Research Use only

Handling

Format:	Lyophilized
Reconstitution:	Reconstitution Volume: 1.0 mL Reconstitution Buffer: Restore with deionized water (or equivalent)
Concentration:	0.5 mg/mL
Buffer:	Buffer: 0.02 M Potassium Phosphate, 0.15 M Sodium Chloride, pH 7.2 Stabilizer: 10 mg/mL Bovine Serum Albumin (BSA) - Immunoglobulin and Protease free Preservative: 0.01 % (w/v) Sodium Azide
Preservative:	Sodium azide
Precaution of Use:	This product contains Sodium azide: a POISONOUS AND HAZARDOUS SUBSTANCE which should be handled by trained staff only.
Handling Advice:	Product is photosensitive and should be protected from light. Avoid cycles of freezing and thawing. Centrifuge Tubulin Antibody if not completely clear after standing at room temperature.
Storage:	RT, 4 °C
Expiry Date:	6 months

Images



Dot Blot

Image 1. Dot Blot of F(ab')₂ Goat anti-Human IgG F(ab')₂ Antibody Phycoerythrin Conjugated Pre-absorbed. Antigen: Human IgG F(ab')₂. Load: Lane 1 - 100 ng Lane 2 - 33.3 ng Lane 3 - 11.1 ng Lane 4 - 3.70 ng Lane 5 - 1.23 ng. Primary antibody: n/a. Secondary antibody: F(ab')₂ Goat anti-Human IgG F(ab')₂ Antibody Phycoerythrin Conjugated Pre-absorbed at 1:1,000 for 60 min at RT. Block: ABIN925618 for 60 min at RT.