

Datasheet for ABIN2669888

**Rabbit anti-Mouse IgG (Heavy & Light Chain) Antibody (PE) -
Preadsorbed**[Go to Product page](#)**1** Image

Overview

Quantity:	500 µg
Target:	IgG
Binding Specificity:	Heavy & Light Chain
Reactivity:	Mouse
Host:	Rabbit
Clonality:	Polyclonal
Conjugate:	PE
Application:	Flow Cytometry (FACS), Fluorescence Microscopy (FM)

Product Details

Immunogen:	Immunogen: Anti-Mouse IgG was produced by repeated immunization with Mouse IgG whole molecule in rabbit. Immunogen Type: Native Protein
Isotype:	IgG
Fragment:	F(ab') ₂ fragment
Specificity:	Assay by immunoelectrophoresis resulted in a single precipitin arc against anti-Phycoerythrin, anti-Rabbit Serum, Mouse IgG and Mouse Serum.
Cross-Reactivity:	Mouse (Murine)
Characteristics:	F(ab') ₂ Mouse IgG (H&L) Antibody Phycoerythrin Conjugated Pre-Adsorbed was generated by enzymatic cleavage and subsequent separation from the Fc fragment. Because of their smaller size, F(ab) ₂ fragments offer several advantages over intact antibodies for use in certain

Product Details

immunochemical techniques and experimental applications. F(ab)₂ fragments penetrate into tissue samples and show better antigen recognition and signal generation in IHC. F(ab)₂ fragments lack the Fc region and therefore do not bind Fc receptors which effectively lowers background staining. F(ab')₂ Mouse IgG (H&L) Antibody Phycoerythrin Conjugated Pre-Adsorbed is ideal for investigators who routinely perform flow cytometry, immunohistochemistry or IHC and other immunoassays.

Purification: Preadsorption: Solid phase absorption

Target Details

Target: IgG

Abstract: [IgG Products](#)

Target Type: Antibody

Background: Synonyms: Rabbit F(ab')₂ Anti-Mouse IgG Antibody phycoerythrin Conjugation, Rabbit Fab₂ Anti-Mouse IgG PE Conjugated Antibody
Background: F(ab')₂ Mouse IgG (H&L) Antibody Phycoerythrin Conjugated Pre-Adsorbed was generated by enzymatic cleavage and subsequent separation from the Fc fragment. Because of their smaller size, F(ab)₂ fragments offer several advantages over intact antibodies for use in certain immunochemical techniques and experimental applications. F(ab)₂ fragments penetrate into tissue samples and show better antigen recognition and signal generation in IHC. F(ab)₂ fragments lack the Fc region and therefore do not bind Fc receptors which effectively lowers background staining. F(ab')₂ Mouse IgG (H&L) Antibody Phycoerythrin Conjugated Pre-Adsorbed is ideal for investigators who routinely perform flow cytometry, immunohistochemistry or IHC and other immunoassays.

Application Details

Application Notes: Application Note: Suitable for immunomicroscopy and flow cytometry or FACS analysis as well as other antibody based fluorescent assays requiring extremely low background levels, absence of F(c) mediated binding, lot-to-lot consistency, high titer and specificity. The maximum amount of reagent required to stain 1 x 10⁶ cells in flow cytometry is approximately 1.0 µg of antibody conjugate. Lesser amounts of reagent may be sufficient for staining. Optimal titers for other applications should be determined by the researcher. As a general guideline dilutions of 1:100 to 1:250 should be suitable for most applications.
Flow Cytometry Dilution: 1:100 - 1:250

Application Details

IF Microscopy Dilution: 1:100 - 1:250

Restrictions: For Research Use only

Handling

Format: Lyophilized

Reconstitution: Reconstitution Volume: 1.0 mL
Reconstitution Buffer: Restore with deionized water (or equivalent)

Concentration: 0.5 mg/mL

Buffer: Buffer: 0.02 M Potassium Phosphate, 0.15 M Sodium Chloride, pH 7.2
Stabilizer: 10 mg/mL Bovine Serum Albumin (BSA) - Immunoglobulin and Protease free
Preservative: 0.01 % (w/v) Sodium Azide

Preservative: Sodium azide

Precaution of Use: This product contains Sodium azide: a POISONOUS AND HAZARDOUS SUBSTANCE which should be handled by trained staff only.

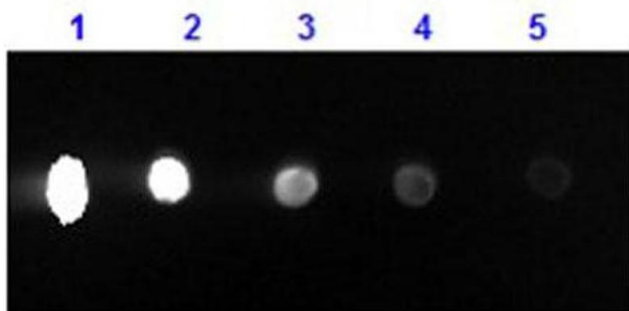
Handling Advice: Product is photosensitive and should be protected from light.

Storage: RT, 4 °C

Storage Comment: Store vial at 4 °C prior to restoration. For extended storage aliquot contents and freeze at -24 °C or below. This product is stable for several weeks at 4 °C as an undiluted liquid.

Expiry Date: 12 months

Images



Dot Blot

Image 1. Dot Blot results of Rabbit F(ab')₂ Anti-Mouse IgG Antibody Phycoerythrin Conjugated. Dots are Mouse IgG at (1) 100ng, (2) 33.3ng, (3) 11.1ng, (4) 3.70ng, (5) 1.23ng. Blocking: ABIN925618 for 60 min at RT. Primary Antibody: none. Secondary Antibody: Rabbit F(ab')₂ Anti-Mouse IgG Antibody RPE at 1µg/mL for 1hr at RT. Imaged with BioRad ChemiDoc, Rhodamine filter.